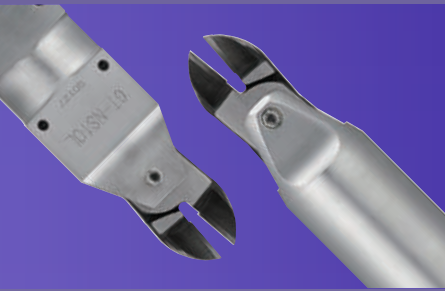
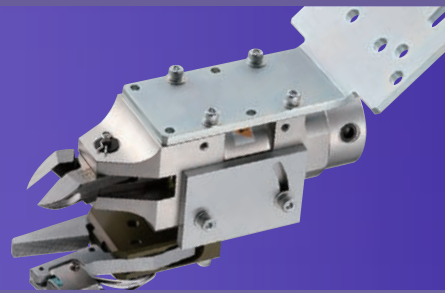
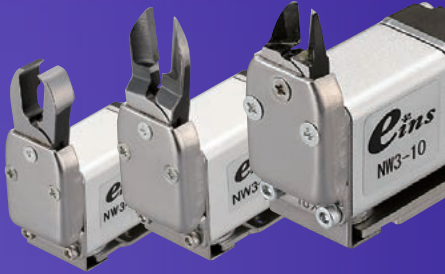


# Cut



## Air Nipper (Small · Medium) ..... 4-2

- ▶ How To Select Nipper ..... 4-2
- ▶ NW Series ..... 4-4
- ▶ HNW Series ..... 4-10
- ▶ Air Nipper ↔ Replacement Blades Selection Table ... 4-16
- ▶ Replacement Blades ..... 4-17
- ▶ Air Nipper ↔ Accessories Selection Table ..... 4-18
- ▶ Accessories ..... 4-19
- ▶ Nipper Mounting Brackets ..... 4-20
- ▶ NW One Touch Clip / Nipper Adjustment Bracket ... 4-21



## Air Nipper (Large) ..... 4-22

- ▶ NT Series ..... 4-23
- ▶ NS Series / NR Series / Booster Unit ..... 4-24
- ▶ Nipper Holders / Brackets / Rotation BRT ..... 4-25
- ▶ NB Series ..... 4-26
- ▶ Sprue Cut Unit / Timing Controller ..... 4-27
- ▶ Replacement Blades / Accessories ..... 4-28
- ▶ Heat Air Nipper (NTH Series / NKH Series) ..... 4-30

### Quick Chuck Change

Quick Chuck Change Manual

Quick Chuck Change Manual (OM Type)

Tool Changer

Automated Hand Exchange System

### Grip

Mini Cylinder

Accessories for Mini Cylinder

Container Cylinders

Accessories for Container Cylinder

Grippers

Rubber Material / Grip Pad

### Suction

Suction Cups

Suction Stems

Pad in Pad

Vacuum Gripper

Air Ejector / Filter / Check Valve

Ultra Small Part Take Out

Vacuum Generator Unit

### Cut

Air Nipper (Small · Medium)

Air Nipper (Large)

### Frame / Module

Jungle Gym

Let's Joint

Rectangular Tube

Base Aluminum Material

Sliding Chuck

### Pneumatic Components / Sensors

Pneumatic Components

Sensors / Multi AND Board

PCIO Communication Unit

### Lightweight Parts Series

Frame / Section / Beam Cylinder / Pads / Piston Manifolds

### By Industry

Logistics - Palletizing  
Steel Metal - Stamping  
Metal Fabrication

### Assembling Tools

Tool / Jig

### Information

Various Products Information



# Air Nipper (Small·Medium)

## ▶ How to select nipper

The air nipper is selected by material and cut diameter (cut area: mm<sup>2</sup>) of gate.

### 1. Check the material of cut gate and sprue.

#### soft resin

PVC (Poly vinyl chloride), PEs(polyester), PE (polyethylene), PS (polystyrene), etc

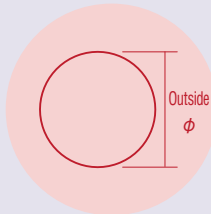
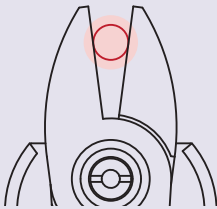
#### Hard resin

PP (polypropylene), PMMA (acrylic), PC (polycarbonate), ABS, Nylon, POM (polyacetal), glass fiber resin, etc

\* Cannot be used with copper/iron wire.

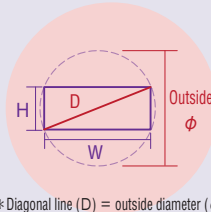
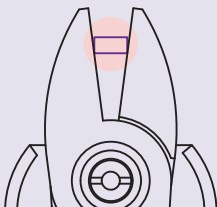
### 2. Check cut diameter (cut area).

#### ■ To cut round gate



Select the nipper referring to the specification table (right):  
**Approximate cutting section diameter ( $\phi$ ) > outside diameter of gate.**

#### ■ To cut square gate

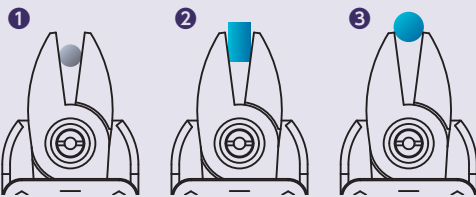


Select the nipper referring to the specification table (right):  
**Approximate cutting section diameter ( $\phi$ ) > Gate maximum width (D).**

\* Cutting guide: (mm<sup>2</sup>) > H × W

\* Diagonal line (D) = outside diameter ( $\phi$ )

#### ■ Gate cutting is impossible when:



- ① Gate is not made of resin.
- ② Gate (H) is longer than blade.
- ③ Gate (H) is greater than blade opening.

### When gate made of hard resin is cut:

- Cutting capacity will decrease by 35%.
- Select the blade with brazed cemented carbide tip.

● Product temperature when the product is cut may influence the finishing state. ● Cutting guide value is for reference.



Please refer to the website for performance table.

- ▶ Pull push operation (a blade slides to a work surface to ensure the beautiful cut surface).
- ▶ Compatible with a variety of cuts to suit a variety of different applications.



Standard blade



Thin blade



Reverse blade



Standard long blade



Reversed long blade



Clip Type Blade

## 仕 様

Product name	Shape of blade	Order code No.	TYPE	Operation	*Used air pressure (Mpa)	Withstand pressure (Mpa)	Cutting capacity		blade section Max opening width of blade(mm)	Weight (g)	Page			
							Soft resin (mm)	Hard resin (mm)						
Air Nipper NW Series	Standard blade	<b>131626</b>	<b>NW3-10</b>	Pull (Max.2mm)	0.4 (4kgf/cm <sup>2</sup> ) } 0.5 (5kgf/cm <sup>2</sup> )	0.7 (7kgf/cm <sup>2</sup> )	φ 1.7 (2.26mm <sup>2</sup> )	φ 1.1 (0.95mm <sup>2</sup> )	3	110	4-4			
	Thin blade	<b>131627</b>	<b>NW3-101</b>											
	Reverse blade	<b>131628</b>	<b>NW3-10R</b>											
	Standard blade	<b>131629</b>	<b>NW3-20</b>	Pull (Max.3mm)			φ 2.8 (6.15mm <sup>2</sup> )	φ 1.8 (2.54mm <sup>2</sup> )	6	6	222	221	4-5	
	<b>NEW</b> Standard blade	<b>131724</b>	<b>NW3-20-BAST</b> (W/ blade open adjust mechanism)											
	Thin blade	<b>131630</b>	<b>NW3-201</b>											
	Reverse blade	<b>131631</b>	<b>NW3-20R</b>											
	<b>NEW</b> Reverse blade	<b>131725</b>	<b>NW3-20R-BAST</b> (W/ blade open adjust mechanism)											
	Standard long blade	<b>131632</b>	<b>NW3-20-V001S</b>											
	Reversed long blade	<b>131633</b>	<b>NW3-20R-V001S</b>	Push (Max.3mm)			φ 2.0 (3.14mm <sup>2</sup> )	φ 1.3 (1.32mm <sup>2</sup> )	7	237	235	236	4-6	
	Clip Type Blade	<b>131634</b>	<b>NW3-20-01C</b>											
	Standard blade	<b>131643</b>	<b>NW3-35</b>											
	<b>NEW</b> Standard blade	<b>131722</b>	<b>NW3-35-BAST</b> (W/ blade open adjust mechanism)	Push (Max.3mm)			φ 3.5 (9.61mm <sup>2</sup> )	φ 2.2 (3.80mm <sup>2</sup> )	9	9	305	306	309	4-7
	Reverse blade	<b>131644</b>	<b>NW3-35R</b>											
	<b>NEW</b> Reverse blade	<b>131723</b>	<b>NW3-35R-BAST</b> (W/ blade open adjust mechanism)											
	Standard long blade	<b>131645</b>	<b>NW3-35-V001S</b>											
	Reversed long blade	<b>131646</b>	<b>NW3-35R-V001S</b>											
	Clip Type Blade	<b>131647</b>	<b>NW3-35-01C</b>											
Standard blade	<b>131771</b>	<b>NW1-50</b>	Pull (Max.5mm)	φ 5.0 (19.62mm <sup>2</sup> )	φ 3.2 (8.03mm <sup>2</sup> )	15	743	745	745	4-8				
Reverse blade	<b>131772</b>	<b>NW1-50R</b>												

\*Reference value Changed according to the use conditions.

### Quick Chuck Change

Quick Chuck Change Manual

Quick Chuck Change Manual (OM Type)

Tool Changer

Automated Hand Exchange System

### Grip

Mini Cylinder

Accessories for Mini Cylinder

Container Cylinders

Accessories for Container Cylinder

Grippers

Rubber Material / Grip Pad

### Suction

Suction Cups

Suction Stems

Pad in Pad

Vacuum Gripper

Air Ejector / Filter / Check Valve

Ultra Small Part Take Out

Vacuum Generator Unit

### Cut

Air Nipper (Small-Medium)

Air Nipper (Large)

### Frame / Module

Jungle Gym

Let's Joint

Rectangular Tube

Base Aluminum Material

Sliding Chuck

### Pneumatic Components / Sensors

Pneumatic Components

Sensors / Multi AND Board

PCIO Communication Unit

### Lightweight Parts Series

Frame / Section / Resin Cylinders / Pads / Resin Manifolds

### By Industry

Logistics-Palletizing/Sheet Metal-Stamping-Metal Fabrication

### Assembling Tools

Tool / Jig

### Information

Various Products Information



# Air Nipper (Small · Medium) NW Series

Attaching an air nipper to the robot on the chuck plate will be very efficient and will save on labor cost.



## Standard blade

Order code No.	<b>131626</b>
TYPE	<b>NW3-10</b>

- Weight : 110g
- Operation : Pull
- Cutting capacity : Soft resin  $\phi$  1.7
- : Hard resin  $\phi$  1.1



## Thin blade

Order code No.	<b>131627</b>
TYPE	<b>NW3-101</b>

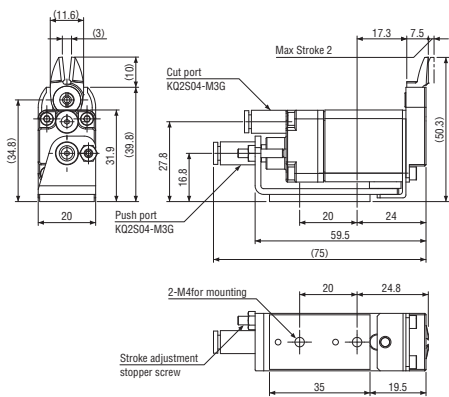
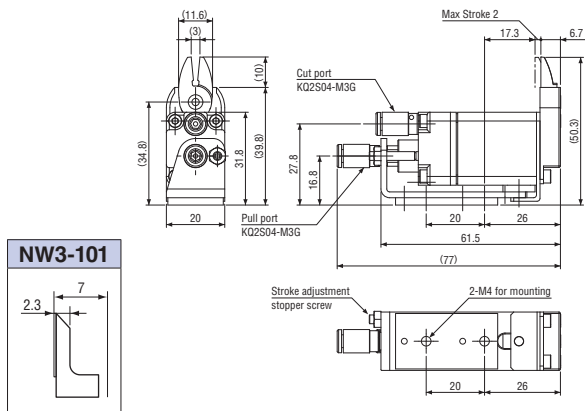
- Weight : 110g
- Operation : Pull
- Cutting capacity : Soft resin  $\phi$  1.7
- : Hard resin  $\phi$  1.1



## Reverse blade

Order code No.	<b>131628</b>
TYPE	<b>NW3-10R</b>

- Weight : 110g
- Operation : Push
- Cutting capacity : Soft resin  $\phi$  1.7
- : Hard resin  $\phi$  1.1



## Standard blade

Order code No.	<b>131629</b>
TYPE	<b>NW3-20</b>

- Weight : 222g
- Operation : Pull
- Cutting capacity : Soft resin  $\phi$  2.8
- : Hard resin  $\phi$  1.8



## Thin blade

Order code No.	<b>131630</b>
TYPE	<b>NW3-201</b>

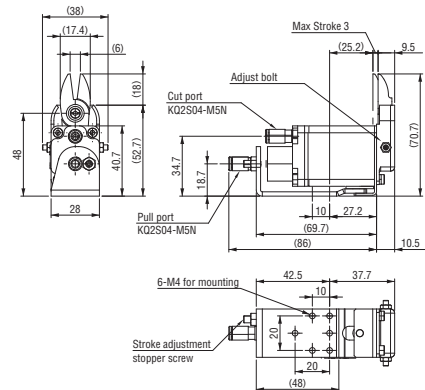
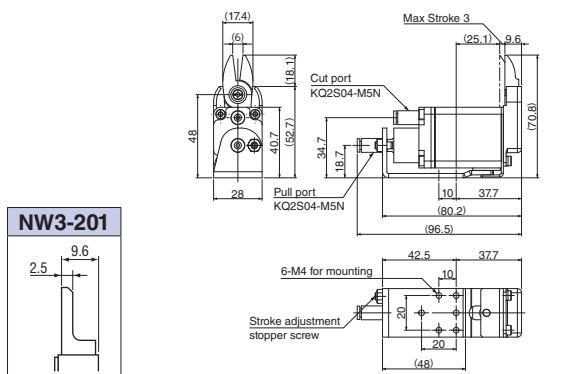
- Weight : 221g
- Operation : Pull
- Cutting capacity : Soft resin  $\phi$  2.8
- : Hard resin  $\phi$  1.8



## Standard blade (W/blade open adjust mechanism)

Order code No.	<b>131724</b>
TYPE	<b>NW3-20-BAST</b>

- Weight : 224g
- Operation : Pull
- Cutting capacity : Soft resin  $\phi$  2.8
- : Hard resin  $\phi$  1.8

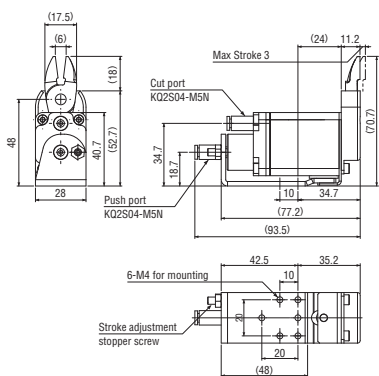




### Reverse blade

Order code No.	<b>131631</b>
TYPE	<b>NW3-20R</b>

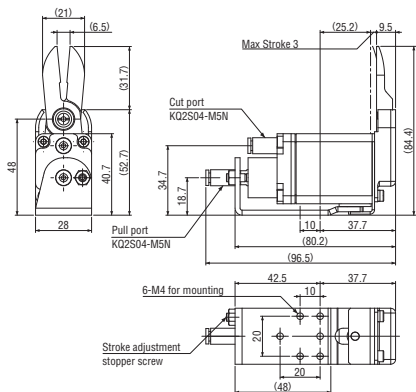
- Weight : 222g ● Operation : Push
- Cutting capacity : Soft resin  $\phi$ 2.8  
: Hard resin  $\phi$ 1.8



### Standard long blade

Order code No.	<b>131632</b>
TYPE	<b>NW3-20-V001S</b>

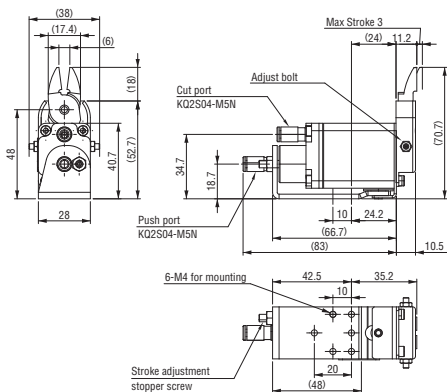
- Weight : 235g ● Operation : Pull
- Cutting capacity : Soft resin  $\phi$ 2.0  
: Hard resin  $\phi$ 1.3



### Reverse blade (W/blade open adjust mechanism)

Order code No.	<b>131725</b>
TYPE	<b>NW3-20R-BAST</b>

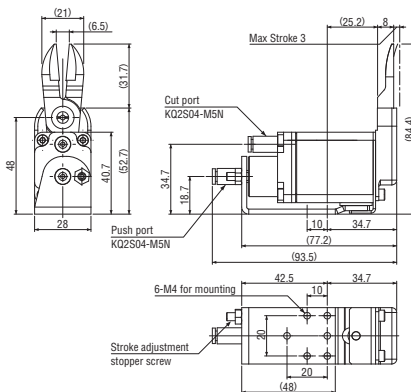
- Weight : 224g ● Operation : Push
- Cutting capacity : Soft resin  $\phi$ 2.8  
: Hard resin  $\phi$ 1.8



### Reversed long blade

Order code No.	<b>131633</b>
TYPE	<b>NW3-20R-V001S</b>

- Weight : 236g ● Operation : Push
- Cutting capacity : Soft resin  $\phi$ 2.0  
: Hard resin  $\phi$ 1.3



#### Quick Chuck Change

- Quick Chuck Change Manual
- Quick Chuck Change Manual (OM Type)
- Tool Changer
- Automated Hand Exchange System

#### Grip

- Mini Cylinder
- Accessories for Mini Cylinder
- Container Cylinders
- Accessories for Container Cylinder

#### Grippers

- Rubber Material / Grip Pad

#### Suction

- Suction Cups
- Suction Stems

#### Pad in Pad

#### Vacuum Gripper

- Air Ejector / Filter / Check Valve
- Ultra Small Part Take Out
- Vacuum Generator Unit

#### Cut

#### Air Nipper (Small-Medium)

#### Air Nipper (Large)

#### Frame / Module

#### Jungle Gym

#### Let's Joint

#### Rectangular Tube

#### Base Aluminum Material

#### Sliding Chuck

#### Pneumatic Components / Sensors

#### Pneumatic Components

#### Sensors / Multi AND Board

#### PCIO Communication Unit

#### Lightweight Parts Series

#### Frame / Suction / Resin Cylinders / Pads / Resin Manifolds

#### By Industry

#### Logistics-Palletizing / Sheet Metal-Stamping- Metal Fabrication

#### Assembling Tools

#### Tool / Jig

#### Information

#### Various Products Information

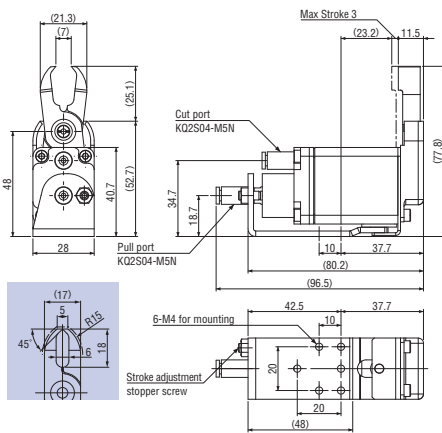
# Air Nipper (Small • Medium) NW Series



## Clip Type Blade

Order code No.	<b>131634</b>
TYPE	<b>NW3-20-01C</b>

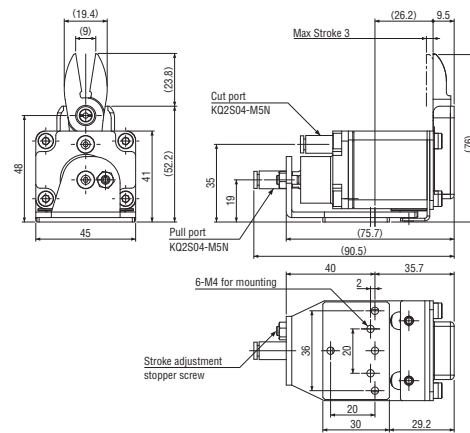
- Weight : 237g
- Operation : Pull
- Cutting capacity : Soft resin  $\phi$  2.0
- : Hard resin  $\phi$  1.3



## Standard blade

Order code No.	<b>131643</b>
TYPE	<b>NW3-35</b>

- Weight : 305g
- Operation : Pull
- Cutting capacity : Soft resin  $\phi$  3.5
- : Hard resin  $\phi$  2.2



Cut • Air Nipper (Small • Medium)

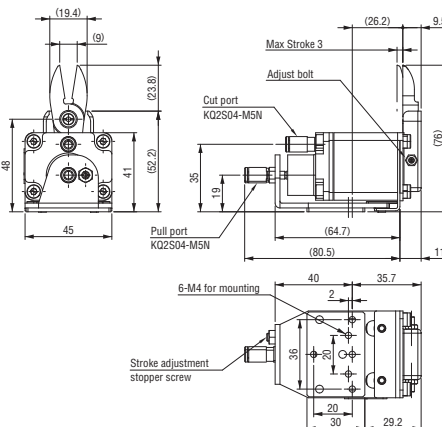
**NEW**



## Standard blade (W/ blade open adjust mechanism)

Order code No.	<b>131722</b>
TYPE	<b>NW3-35-BAST</b>

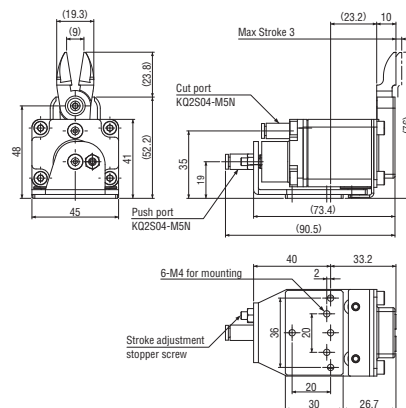
- Weight : 306g
- Operation : Pull
- Cutting capacity : Soft resin  $\phi$  3.5
- : Hard resin  $\phi$  2.2



## Reverse blade

Order code No.	<b>131644</b>
TYPE	<b>NW3-35R</b>

- Weight : 305g
- Operation : Push
- Cutting capacity : Soft resin  $\phi$  3.5
- : Hard resin  $\phi$  2.2



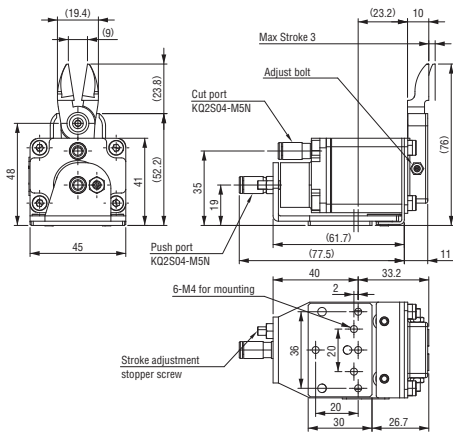
NEW



### Reverse blade (W/ blade open adjust mechanism)

Order code No.	<b>131723</b>
TYPE	<b>NW3-35R-BAST</b>

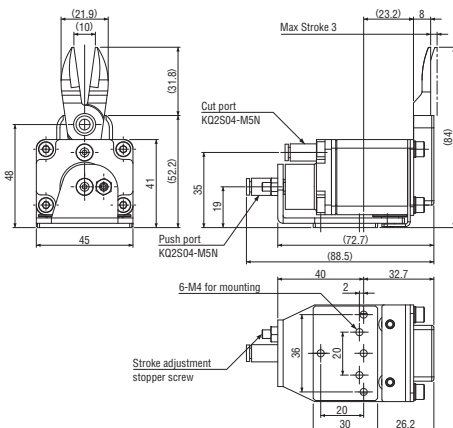
- Weight : 309g
- Operation : Push
- Cutting capacity : Soft resin  $\phi$  3.5  
: Hard resin  $\phi$  2.2



### Reversed long blade

Order code No.	<b>131646</b>
TYPE	<b>NW3-35R-V001S</b>

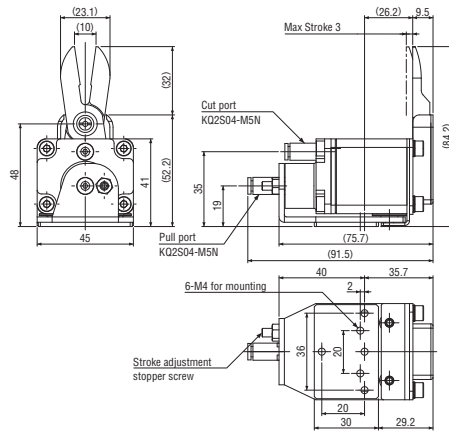
- Weight : 322g
- Operation : Push
- Cutting capacity : Soft resin  $\phi$  3.0  
: Hard resin  $\phi$  1.9



### Standard long blade

Order code No.	<b>131645</b>
TYPE	<b>NW3-35-V001S</b>

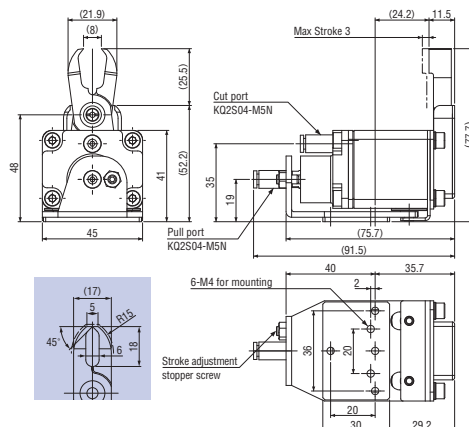
- Weight : 322g
- Operation : Pull
- Cutting capacity : Soft resin  $\phi$  3.0  
: Hard resin  $\phi$  1.9



### Clip Type Blade

Order code No.	<b>131647</b>
TYPE	<b>NW3-35-01C</b>

- Weight : 325g
- Operation : Pull
- Cutting capacity : Soft resin  $\phi$  3.0  
: Hard resin  $\phi$  1.9



### Quick Chuck Change

Quick Chuck Change Manual

Quick Chuck Change Manual (OM Type)

Tool Changer

Automated Hand Exchange System

### Grip

Mini Cylinder

Accessories for Mini Cylinder

Container Cylinders

Accessories for Container Cylinder

Grippers

Rubber Material / Grip Pad

### Suction

Suction Cups

Suction Stems

Pad in Pad

Vacuum Gripper

Air Ejector / Filter / Check Valve

Ultra Small Part Take Out

Vacuum Generator Unit

### Cut

Air Nipper (Small-Medium)

Air Nipper (Large)

Frame / Module

Jungle Gym

Let's Joint

Rectangular Tube

Base Aluminum Material

Sliding Chuck

Pneumatic Components / Sensors

Pneumatic Components

Sensors / Multi AND Board

PCIO Communication Unit

Lightweight Parts Series

Frame / Section / Resin Cylinders / Pads / Resin Manifolds

By Industry

Logistics-Palletizing/Sheet Metal-Stamping-Metal Fabrication

Assembling Tools

Tool / Jig

### Information

Various Products Information

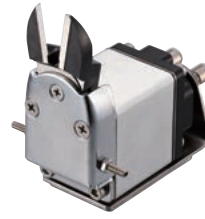
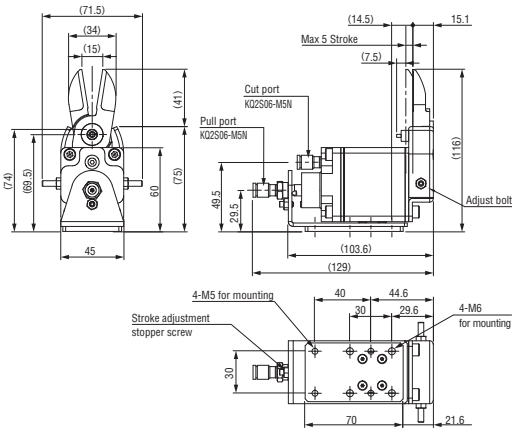
# Air Nipper (Small • Medium) NW Series



## Standard blade

Order code No.	<b>131771</b>
TYPE	<b>NW1-50</b>

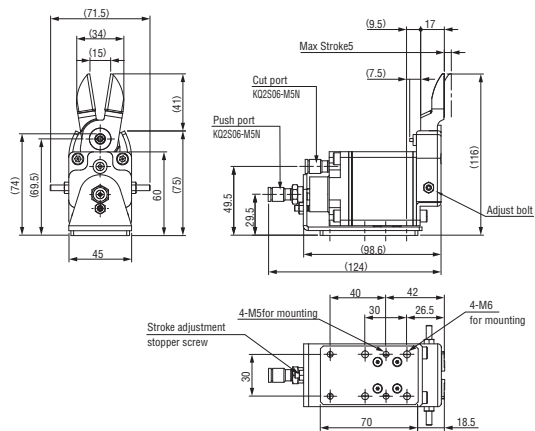
- W/ blade open adjust mechanism
- Weight : 743g ● Operation : Pull
- Cutting capacity : Soft resin  $\phi$  5.0  
: Hard resin  $\phi$  3.2



## Reverse blade

Order code No.	<b>131772</b>
TYPE	<b>NW1-50R</b>

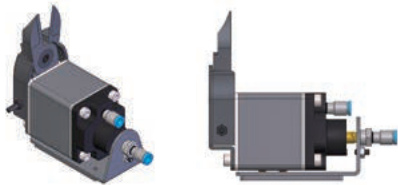
- W/ blade open adjust mechanism
- Weight : 745g ● Operation : Push
- Cutting capacity : Soft resin  $\phi$  5.0  
: Hard resin  $\phi$  3.2



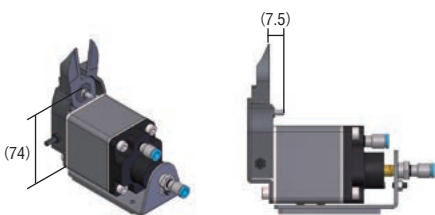
Cut • Air Nipper (Small • Medium)

The conventional products NW-50 and the NW-50R, are on sale until the stock is gone. Also, the fixing method of the blade as the subsequent product is changed to the nut type, and bolt protrudes, so please notice the interference with workpiece. (See following chart)

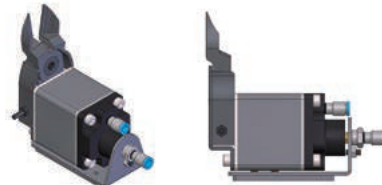
### Conventional product NW-50



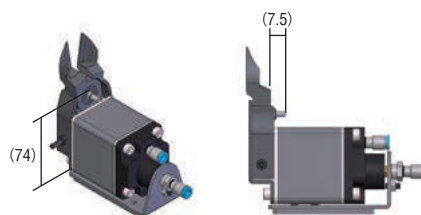
### Subsequent product NW1-50



### Conventional product NW-50R



### Subsequent product NW1-50R





# MEMO

A series of horizontal dashed lines for writing.



# Air Nipper(Small • Medium) HNW Series



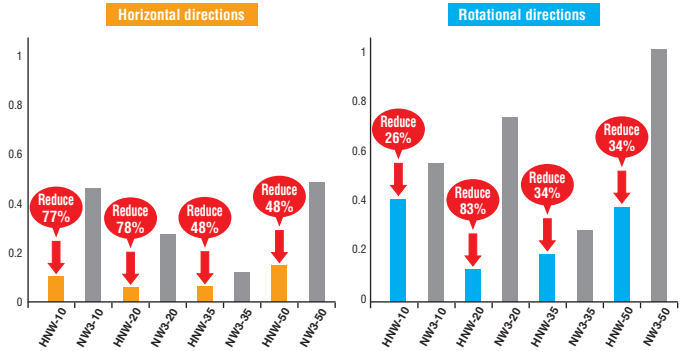
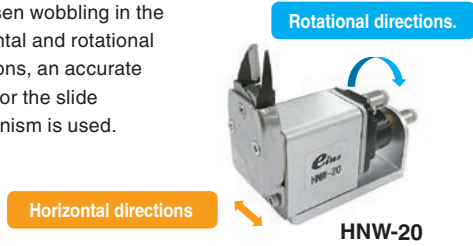
Please refer to the website for performance table.

The achievement of high precision in gate cutting is attributed to minimal vibration during the sliding process and consistent load application.

► Lineup as well as the NW3 series. Mounting size is similar to the NW3 series.

## New product features

To lessen wobbling in the horizontal and rotational directions, an accurate guide for the slide mechanism is used.



## Specification

Product name	Shape of blade	Order code No.	TYPE	Operation	Used air pressure (Mpa)	Withstand pressure (Mpa)	Cutting capacity		blade section Max opening width of blade (mm)	Weight (g)	Page of details
							Soft resin (mm)	Hard resin (mm)			
Air Nipper(Small•Medium) HNW Series		073301	HNW-10	Pull (Max.2mm)	0.4 (4kgf/cm <sup>2</sup> ) } 0.5 (5kgf/cm <sup>2</sup> )	0.7 (7kgf/cm <sup>2</sup> )	φ 1.7 (2.26mm <sup>2</sup> )	φ 1.1 (0.95mm <sup>2</sup> )	3	80	4-11
		073302	HNW-101								
		073303	HNW-10R								
		073304	HNW-20	Pull (Max.3mm)			195				
		073305	HNW-201								
		073308	HNW-20R	Push (Max.3mm)			200	4-12			
		073306	HNW-20-V001S	Pull (Max.3mm)			214				
		073309	HNW-20R-V001S	Push (Max.3mm)					219		
		073307	HNW-20-01C	Pull (Max.3mm)			214	4-13			
		073310	HNW-35						Push (Max.3mm)	212	
		073313	HNW-35R								
		073311	HNW-35-V001S	Pull (Max.3mm)			229	4-14			
		073314	HNW-35R-V001S	Push (Max.3mm)					8		
		073312	HNW-35-01C	Pull (Max.3mm)			234				
		073355	HNW1-50	Pull (Max.5mm)			687	4-15			
		073356	HNW1-50R	Push (Max.5mm)					685		

\*Reference value Changed according to the use conditions.

NEW



### Standard blade

Order code No. **073301**

TYPE **HNW-10**

- Weight : 80g
- Operation : Pull
- Cutting capacity : Soft resin  $\phi 1.7$   
: Hard resin  $\phi 1.1$

NEW

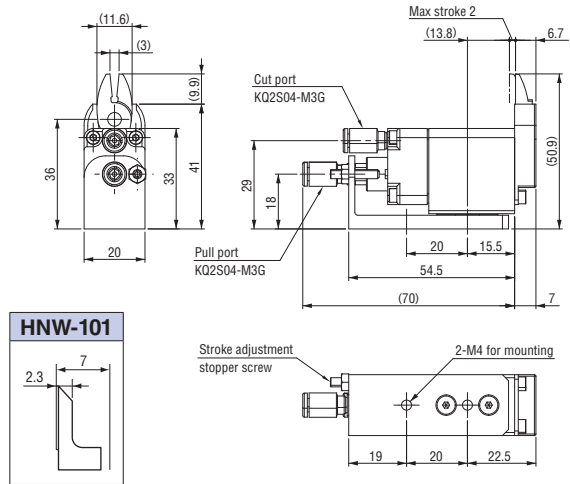


### Thin blade

Order code No. **073302**

TYPE **HNW-101**

- Weight : 80g
- Operation : Pull
- Cutting capacity : Soft resin  $\phi 1.7$   
: Hard resin  $\phi 1.1$



NEW

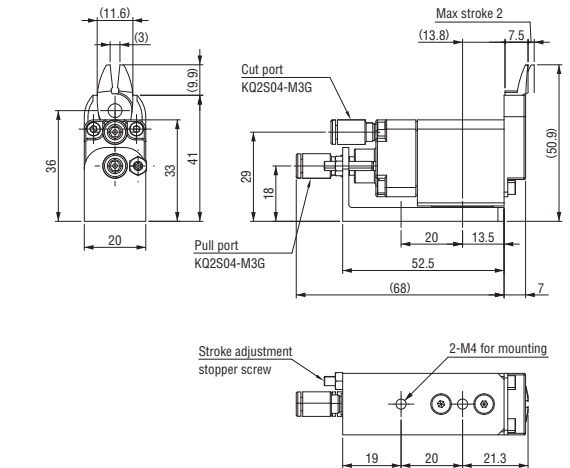


### Reverse blade

Order code No. **073303**

TYPE **HNW-10R**

- Weight : 85g
- Operation : Push
- Cutting capacity : Soft resin  $\phi 1.7$   
: Hard resin  $\phi 1.1$



NEW



### Standard blade

Order code No. **073304**

TYPE **HNW-20**

- Weight : 195g
- Operation : Pull
- Cutting capacity : Soft resin  $\phi 2.8$   
: Hard resin  $\phi 1.8$

NEW

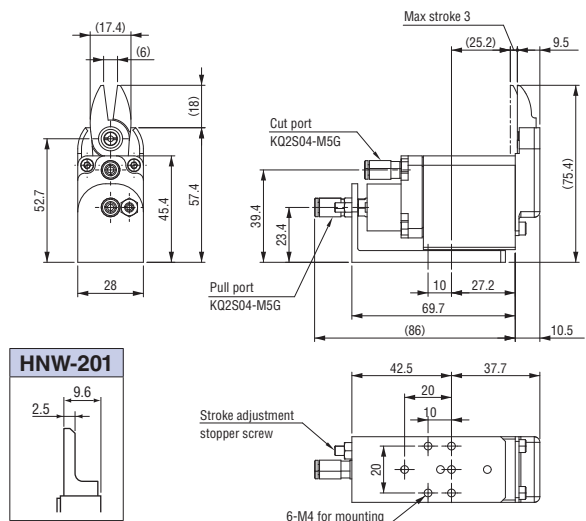


### Thin blade

Order code No. **073305**

TYPE **HNW-201**

- Weight : 195g
- Operation : Pull
- Cutting capacity : Soft resin  $\phi 2.8$   
: Hard resin  $\phi 1.8$



#### Quick Chuck Change

Quick Chuck Change Manual

Quick Chuck Change Manual (OM Type)

Tool Changer

Automated Hand Exchange System

#### Grip

Mini Cylinder

Accessories for Mini Cylinder

Container Cylinders

Accessories for Container Cylinder

Grippers

Rubber Material / Grip Pad

#### Suction

Suction Cups

Suction Stems

Pad in Pad

Vacuum Gripper

Air Ejector / Filter / Check Valve

Ultra Small Part Take Out

Vacuum Generator Unit

#### Cut

Air Nipper (Small-Medium)

Air Nipper (Large)

#### Frame / Module

Jungle Gym

Let's Joint

Rectangular Tube

Base Aluminum Material

Sliding Chuck

#### Pneumatic Components / Sensors

Pneumatic Components

Sensors / Multi AND Board

PCIO Communication Unit

#### Lightweight Parts Series

Frame / Suction / Resin Cylinders / Pads / Resin Manifolds

#### By Industry

Logistics-Palletizing/Sheet Metal-Stamping-Metal Fabrication

#### Assembling Tools

Tool / Jig

#### Information

Various Products Information

# Air Nipper (Small • Medium) HNW Series

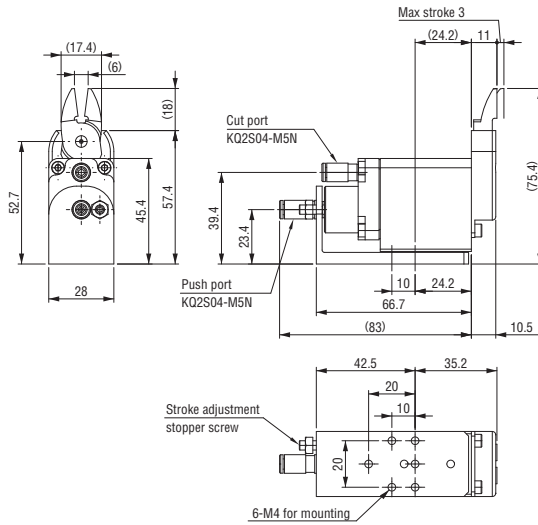
NEW



## Reverse blade

Order code No.	<b>073308</b>
TYPE	<b>HNW-20R</b>

- Weight : 200g
- Operation : Push
- Cutting capacity : Soft resin  $\phi$  2.8  
: Hard resin  $\phi$  1.8



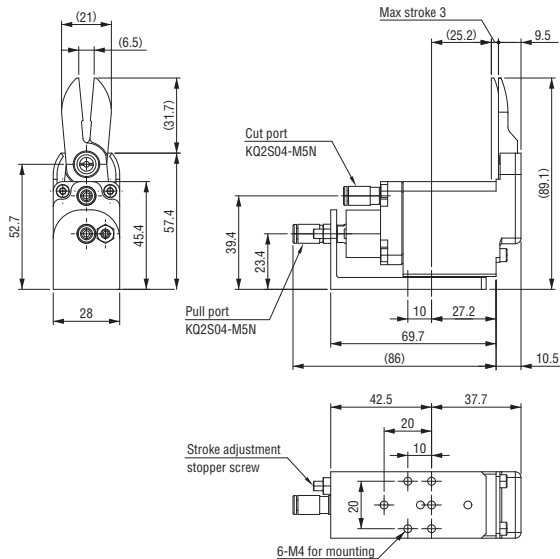
NEW



## Standard long blade

Order code No.	<b>073306</b>
TYPE	<b>HNW-20-V001S</b>

- Weight : 214g
- Operation : Pull
- Cutting capacity : Soft resin  $\phi$  2.0  
: Hard resin  $\phi$  1.3



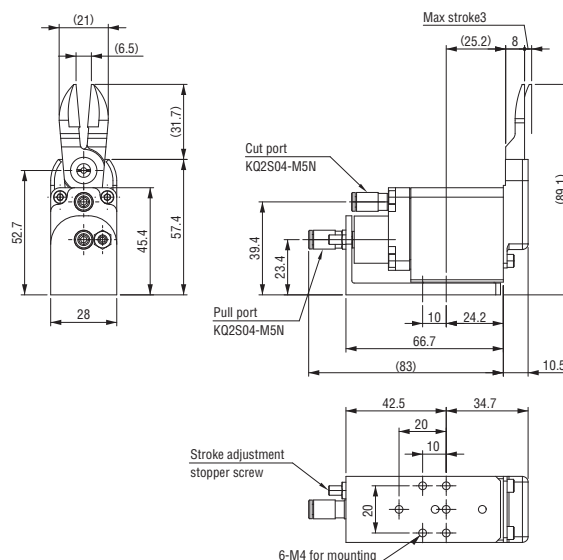
NEW



## Reversed long blade

Order code No.	<b>073309</b>
TYPE	<b>HNW-20R-V001S</b>

- Weight : 219g
- Operation : Push
- Cutting capacity : Soft resin  $\phi$  2.0  
: Hard resin  $\phi$  1.3



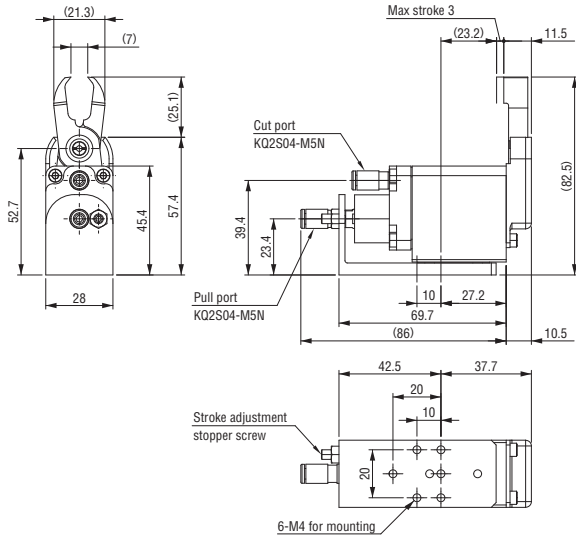
**NEW**



**Clip Type Blade**

Order code No.	<b>073307</b>
TYPE	<b>HNW-20-01C</b>

- Weight : 214g
- Operation : Pull
- Cutting capacity : Soft resin  $\phi 2.0$   
: Hard resin  $\phi 1.3$



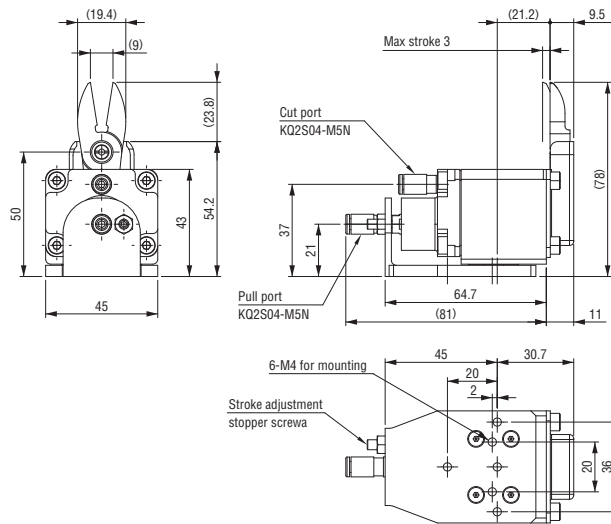
**NEW**



**Standard blade**

Order code No.	<b>073310</b>
TYPE	<b>HNW-35</b>

- Weight : 212g
- Operation : Pull
- Cutting capacity : Soft resin  $\phi 3.5$   
: Hard resin  $\phi 2.2$



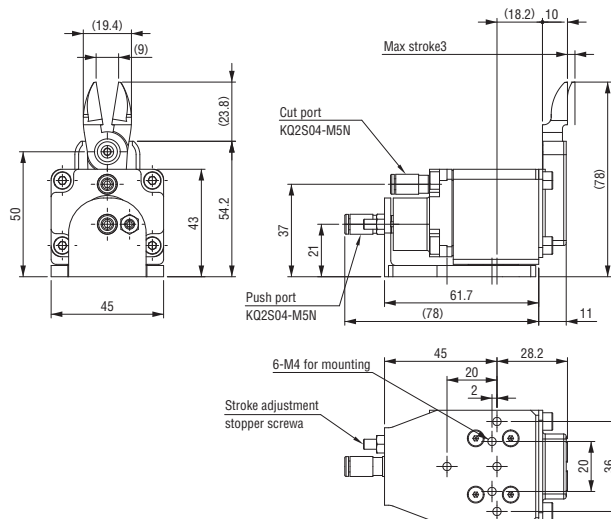
**NEW**



**Reverse blade**

Order code No.	<b>073313</b>
TYPE	<b>HNW-35R</b>

- Weight : 212g
- Operation : Push
- Cutting capacity : Soft resin  $\phi 3.5$   
: Hard resin  $\phi 2.2$



**Quick Chuck Change**

- Quick Chuck Change Manual
- Quick Chuck Change Manual (OM Type)
- Tool Changer
- Automated Hand Exchange System

**Grip**

- Mini Cylinder
- Accessories for Mini Cylinder
- Container Cylinders
- Accessories for Container Cylinder
- Grippers
- Rubber Material / Grip Pad

**Suction**

- Suction Cups
- Suction Stems
- Pad in Pad
- Vacuum Gripper
- Air Ejector / Filter / Check Valve
- Ultra Small Part Take Out
- Vacuum Generator Unit

**Cut**

- Air Nipper (Small-Medium)
- Air Nipper (Large)
- Frame / Module
- Jungle Gym
- Let's Joint
- Rectangular Tube
- Base Aluminum Material
- Sliding Chuck

**Pneumatic Components / Sensors**

- Pneumatic Components
- Sensors / Multi AND Board
- PCIO Communication Unit

**Lightweight Parts Series**

- Frame / Section / Resin Cylinders / Pads / Resin Manifolds

**By Industry**

- Logistics-Palletizing/Sheet Metal-Stamping-Metal Fabrication

**Assembling Tools**

- Tool / Jig

**Information**

- Various Products Information

# Air Nipper (Small • Medium) HNW Series

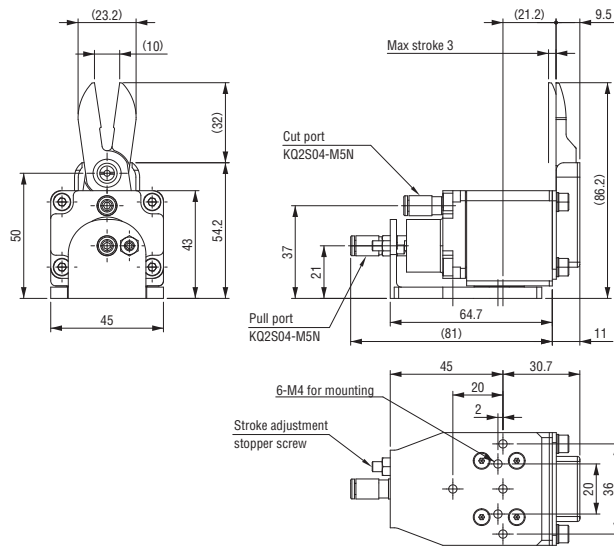
NEW



## Standard long blade

Order code No.	<b>073311</b>
TYPE	<b>HNW-35-V001S</b>

- Weight : 229g
- Operation : Pull
- Cutting capacity : Soft resin  $\phi$  3.0  
: Hard resin  $\phi$  1.9



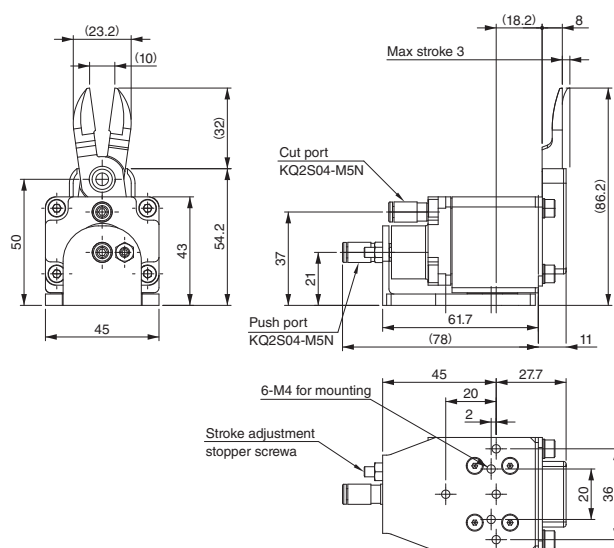
NEW



## Reverse long blade

Order code No.	<b>073314</b>
TYPE	<b>HNW-35R-V001S</b>

- Weight : 229g
- Operation : Push
- Cutting capacity : Soft resin  $\phi$  3.0  
: Hard resin  $\phi$  1.9



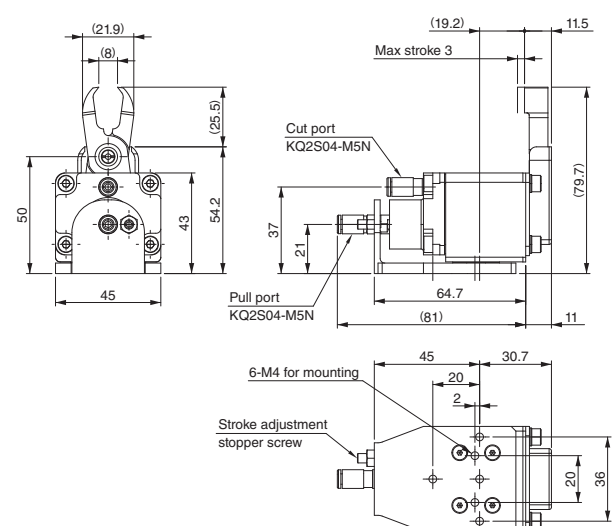
NEW



## Clip Type Blade

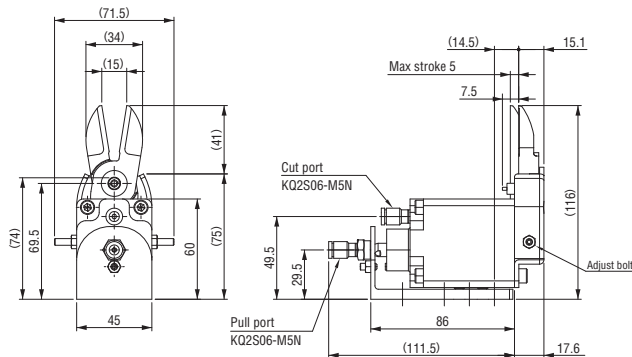
Order code No.	<b>073312</b>
TYPE	<b>HNW-35-01C</b>

- Weight : 234g
- Operation : Pull
- Cutting capacity : Soft resin  $\phi$  3.0  
: Hard resin  $\phi$  1.9



▶ The  $\phi 5$  (soft resin) product can be cut. The slide includes the new mechanism.

**NEW**

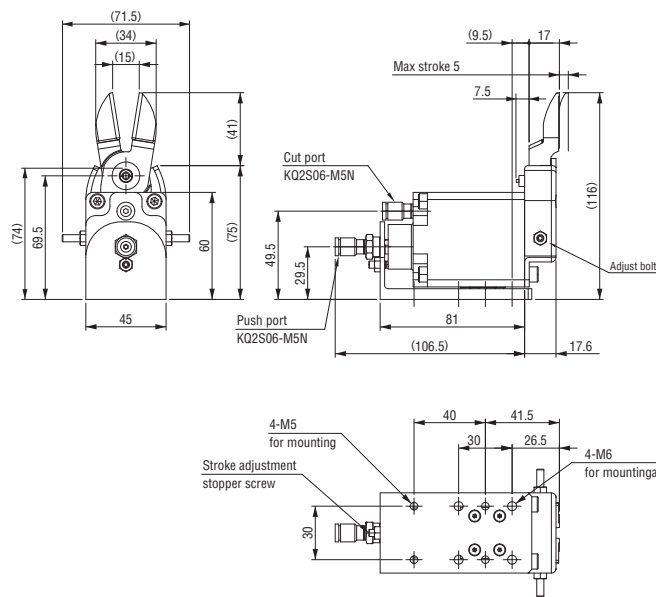


**Standard blade**

Order code No.	<b>073355</b>
TYPE	<b>HNW1-50</b>

- W/ blade open adjust mechanism
- Weight : 687g
- Operation : Pull
- Cutting capacity : Soft resin  $\phi 5.0$   
: Hard resin  $\phi 3.2$

**NEW**



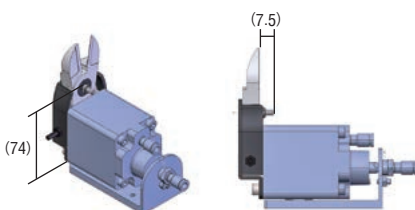
**Reverse blade**

Order code No.	<b>073356</b>
TYPE	<b>HNW1-50R</b>

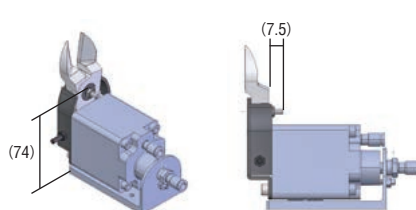
- W/ blade open adjust mechanism
- Weight : 685g
- Operation : Push
- Cutting capacity : Soft resin  $\phi 5.0$   
: Hard resin  $\phi 3.2$

The conventional products HNW-50 and the HNW-50R, are on sale until the stock is gone. Also, the fixing method of the blade as the subsequent product is changed to the nut type, and bolt protrudes, so please notice the interference with workpiece. (See following chart)

**HNW1-50**



**HNW1-50R**



**Quick Chuck Change**

Quick Chuck Change Manual

Quick Chuck Change Manual (OM Type)

Tool Changer

Automated Hand Exchange System

**Grip**

Mini Cylinder

Accessories for Mini Cylinder

Container Cylinders

Accessories for Container Cylinder

Grippers

Rubber Material / Grip Pad

**Suction**

Suction Cups

Suction Stems

Pad in Pad

Vacuum Gripper

Air Ejector / Filter / Check Valve

Ultra Small Part Take Out

Vacuum Generator Unit

**Cut**

Air Nipper (Small-Medium)

Air Nipper (Large)

**Frame / Module**

Jungle Gym

Let's Joint

Rectangular Tube

Base Aluminum Material

Sliding Chuck

**Pneumatic Components / Sensors**

Pneumatic Components

Sensors / Multi AND Board

PCIO Communication Unit

**Lightweight Parts Series**

Frame / Section / Resin Cylinders / Pads / Resin Manifolds

**By Industry**

Logistics-Palletizing/Sheet Metal-Stamping-Metal Fabrication

**Assembling Tools**

Tool / Jig

**Information**

Various Products Information



# Air Nipper (Small • Medium) ↔ Replacement Blades Selection Table

Air Nipper (Small • Medium)	Air nipper (10Series)			Air nipper (20Series)						Air nipper (35Series)					Air nipper (50Series)																					
Replacement Blades	131626	073301	131627	131628	073302	131629	131724	073304	131630	073305	131631	131725	073308	131632	073306	131633	073309	131634	073307	131643	131722	073310	131644	131723	073313	131645	073311	131646	073314	131647	073312	131771	073355	131772	073356	
	NW*-10	NW*-10	NW*-101	NW*-101	NW*-10R	NW*-10R	NW*-20	NW*-20-BAST	NW*-20	NW*-201	NW*-201	NW*-20R	NW*-20R	NW*-20-V001S	NW*-20-V001S	NW*-20R-V001S	NW*-20R-V001S	NW*-20-01C	NW*-20-01C	NW*-35	NW*-35-BAST	NW*-35	NW*-35R	NW*-35R	NW*-35R-BAST	NW*-35R	NW*-35-V001S	NW*-35-V001S	NW*-35R-V001S	NW*-35R-V001S	NW*-35-01C	NW*-35-01C	NW*-50	NW*-50	NW*-50R	NW*-50R
041050 EG-NW10 (Standard blade)	○	○	-	-	-	-	-	-	-	-	-	-	-	-	-	-	-	-	-	-	-	-	-	-	-	-	-	-	-	-	-	-	-	-	-	-
041051 EG-NW101 (Thin blade)	○	○	-	-	-	-	-	-	-	-	-	-	-	-	-	-	-	-	-	-	-	-	-	-	-	-	-	-	-	-	-	-	-	-	-	-
041758 EG-NW10R (Reverse blade)	-	-	-	○	-	-	-	-	-	-	-	-	-	-	-	-	-	-	-	-	-	-	-	-	-	-	-	-	-	-	-	-	-	-	-	-
041871 EG1-NW20 (Standard blade)	-	-	-	-	○	○	-	-	○	-	-	○	-	○	-	○	-	○	-	-	-	-	-	-	-	-	-	-	-	-	-	-	-	-	-	-
041872 EG1-NW201 (Thin blade)	-	-	-	-	○	○	-	-	○	-	-	○	-	○	-	○	-	○	-	-	-	-	-	-	-	-	-	-	-	-	-	-	-	-	-	-
041064 EG-NW20-V001S (Standard blade • Standard long blade)	-	-	-	-	○	○	-	-	○	-	-	○	-	○	-	○	-	○	-	-	-	-	-	-	-	-	-	-	-	-	-	-	-	-	-	-
041066 EG-NW20-01C (Clip Type Blade)	-	-	-	-	○	○	-	-	○	-	-	○	-	○	-	○	-	○	-	-	-	-	-	-	-	-	-	-	-	-	-	-	-	-	-	-
041876 EG1-NW20 (Standard blade • Carbide blade)	-	-	-	-	○	○	-	-	○	-	-	○	-	○	-	○	-	○	-	-	-	-	-	-	-	-	-	-	-	-	-	-	-	-	-	-
041873 EG1-NW20-AST (Standard blade • Adjustable opening)	-	-	-	-	○	○	-	-	○	-	-	○	-	○	-	○	-	○	-	-	-	-	-	-	-	-	-	-	-	-	-	-	-	-	-	-
041874 EG1-NW201-AST (Thin blade • Adjustable opening)	-	-	-	-	○	○	-	-	○	-	-	○	-	○	-	○	-	○	-	-	-	-	-	-	-	-	-	-	-	-	-	-	-	-	-	-
041916 EG1-NW20R (Reverse blade)	-	-	-	-	-	○	-	-	○	-	-	○	-	○	-	○	-	○	-	-	-	-	-	-	-	-	-	-	-	-	-	-	-	-	-	-
041361 EG-NW20R-V001S (Reverse blade • Standard long blade)	-	-	-	-	-	○	-	-	○	-	-	○	-	○	-	○	-	○	-	-	-	-	-	-	-	-	-	-	-	-	-	-	-	-	-	-
041923 EG1-NW20R (Reverse blade • Carbide blade)	-	-	-	-	-	○	-	-	○	-	-	○	-	○	-	○	-	○	-	-	-	-	-	-	-	-	-	-	-	-	-	-	-	-	-	-
041924 EG1-NW20R-AST (Reverse blade • Adjustable opening)	-	-	-	-	-	○	-	-	○	-	-	○	-	○	-	○	-	○	-	-	-	-	-	-	-	-	-	-	-	-	-	-	-	-	-	-
041851 EG1-NW35 (Standard blade)	-	-	-	-	-	-	-	-	-	-	-	-	-	-	-	-	-	-	-	○	-	○	-	○	-	○	-	○	-	○	-	○	-	-	-	-
041065 EG-NW35-V001S (Standard blade • Standard long blade)	-	-	-	-	-	-	-	-	-	-	-	-	-	-	-	-	-	-	-	○	-	○	-	○	-	○	-	○	-	○	-	○	-	-	-	-
041067 EG-NW35-01C (Clip Type Blade)	-	-	-	-	-	-	-	-	-	-	-	-	-	-	-	-	-	-	-	○	-	○	-	○	-	○	-	○	-	○	-	○	-	-	-	-
041866 EG1-NW35 (Standard blade • Carbide blade)	-	-	-	-	-	-	-	-	-	-	-	-	-	-	-	-	-	-	-	○	-	○	-	○	-	○	-	○	-	○	-	○	-	-	-	-
041853 EG1-NW35 (Standard blade • Adjustable opening)	-	-	-	-	-	-	-	-	-	-	-	-	-	-	-	-	-	-	-	○	-	○	-	○	-	○	-	○	-	○	-	○	-	-	-	-
041852 EG1-NW35R (Reverse blade)	-	-	-	-	-	-	-	-	-	-	-	-	-	-	-	-	-	-	-	-	○	-	○	-	○	-	○	-	○	-	○	-	-	-	-	-
041310 EG-NW35R-V001S (Reverse blade • Standard long blade)	-	-	-	-	-	-	-	-	-	-	-	-	-	-	-	-	-	-	-	-	○	-	○	-	○	-	○	-	○	-	○	-	-	-	-	-
041867 EG1-NW35R (Reverse blade • Carbide blade)	-	-	-	-	-	-	-	-	-	-	-	-	-	-	-	-	-	-	-	-	○	-	○	-	○	-	○	-	○	-	○	-	-	-	-	-
041854 EG1-NW35R-AST (Reverse blade • Adjustable opening)	-	-	-	-	-	-	-	-	-	-	-	-	-	-	-	-	-	-	-	-	○	-	○	-	○	-	○	-	○	-	○	-	-	-	-	-
042134 EG1-NW50 (Standard blade)	-	-	-	-	-	-	-	-	-	-	-	-	-	-	-	-	-	-	-	-	-	-	-	-	-	-	-	-	-	-	-	○	-	-	-	
042135 EG1-NW50R (Reverse blade)	-	-	-	-	-	-	-	-	-	-	-	-	-	-	-	-	-	-	-	-	-	-	-	-	-	-	-	-	-	-	-	-	○	-	-	

Cut • Air Nipper (Small • Medium)





# Air Nipper (Small・Medium) Replacement Blades



Please refer to the website for performance table.

Please use the replacement blade of the air nipper (small and medium type).

## Spare Blade

	Order code No.	<b>041050</b>	<b>041051</b>	<b>041758</b>	<b>041871</b>
	TYPE	<b>EG-NW10</b>	<b>EG-NW101</b>	<b>EG-NW10R</b>	<b>EG1-NW20</b>
	Weight	20g	20g	22g	61g
	Supported nipper	NW*-10, HNW-10 (Standard blade)	NW*-101, HNW-101 (thin blade)	NW*-10R, HNW-10R (Reverse blade)	NW*-20, HNW-20 (Standard blade)
	Order code No.	<b>041872</b>	<b>041916</b>	<b>041851</b>	<b>041852</b>
	TYPE	<b>EG1-NW201</b>	<b>EG1-NW20R</b>	<b>EG1-NW35</b>	<b>EG1-NW35R</b>
Weight	61g	62g	68g	68g	
Supported nipper	NW*-201, HNW-201 (thin blade)	NW*-20R, HNW-20R (Reverse blade)	NW*-35, HNW-35 (Standard blade)	NW*-35R, HNW-35R (Reverse blade)	

## Standard long blade

	Order code No.	<b>041064</b>	<b>041361</b>	<b>041065</b>	<b>041310</b>
	TYPE	<b>EG-NW20-V001S</b>	<b>EG-NW20R-V001S</b>	<b>EG-NW35-V001S</b>	<b>EG-NW35R-V001S</b>
	Weight	80g	80g	85g	85g
Supported nipper	NW*-20, HNW-20 (Standard blade)	NW*-20R, HNW-20R (Reverse blade)	NW*-35, HNW-35 (Standard blade)	NW*-35R, HNW-35R (Reverse blade)	

## Carbide blade

	Order code No.	<b>041876</b>	<b>041923</b>	<b>041866</b>	<b>041867</b>
	TYPE	<b>EG1-NW20 (Carbide blade)</b>	<b>EG1-NW20R (Carbide blade)</b>	<b>EG1-NW35 (Carbide blade)</b>	<b>EG1-NW35R (Carbide blade)</b>
	Weight	61g	70g	68g	68g
Supported nipper	NW*-20, HNW-20 (Standard blade)	NW*-20R, HNW-20R (Reverse blade)	NW*-35, HNW-35 (Standard blade)	NW*-35R, HNW-35R (Reverse blade)	

## Clip Type Blade

	Order code No.	<b>041066</b>	<b>041067</b>
	TYPE	<b>EG-NW20-01C</b>	<b>EG-NW35-01C</b>
	Weight	80g	90g
Supported nipper	NW*-20, NW*-20R, HNW-20, HNW-20R	NW*-35, NW*-35R, HNW-35, HNW-35R	

## Adjustable opening

\* Setscrew with hexagon socket and hexagon nut are included.

<p>Blade opening can be adjusted by two screws.</p>	Order code No.	<b>041873</b>	<b>041874</b>	<b>041924</b>
	TYPE	<b>EG1-NW20-AST</b>	<b>EG1-NW201-AST</b>	<b>EG1-NW20R-AST</b>
	Weight	63g	61g	63g
	Supported nipper	NW*-20, HNW-20 (Standard blade)	NW*-201, HNW-201 (thin blade)	NW*-20R, HNW-20R (Reverse blade)
	Order code No.	<b>041853</b>	<b>041854</b>	
	TYPE	<b>EG1-NW35-AST</b>	<b>EG1-NW35R-AST</b>	
Weight	69g	72g		
Supported nipper	NW*-35, HNW-35 (Standard blade)	NW*-35R, HNW-35R (Reverse blade)		

● If you would like another blade, please contact us.

## For NW-50, 50R

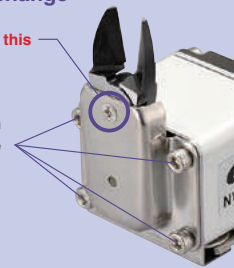
### Spare blade (w/blade opening adjusting)

	Order code No.	<b>042134</b>	<b>042135</b>
	TYPE	<b>EG1-NW50</b>	<b>EG1-NW50R</b>
	Weight	265g	270g
Supported nipper	NW*-50, HNW*-50 (Standard blade)	NW*-50R, HNW*-50R (Reverse blade)	

## About Blade Exchange

Notice : Don't remove this bolt.

Remove the four bolts in four corners of the blade holder and replace it.



## Quick Chuck Change

Quick Chuck Change Manual

Quick Chuck Change Manual (OM Type)

Tool Changer

Automated Hand Exchange System

## Grip

Mini Cylinder

Accessories for Mini Cylinder

Container Cylinders

Accessories for Container Cylinder

Grippers

Rubber Material / Grip Pad

## Suction

Suction Cups

Suction Stems

Pad in Pad

Vacuum Gripper

Air Ejector / Filter / Check Valve

Ultra Small Part Take Out

Vacuum Generator Unit

## Cut

Air Nipper (Small-Medium)

Air Nipper (Large)

## Frame / Module

Jungle Gym

Let's Joint

Rectangular Tube

Base Aluminum Material

Sliding Chuck

## Pneumatic Components / Sensors

Pneumatic Components

Sensors / Multi AND Board

PCIO Communication Unit

## Lightweight Parts Series

Frame / Suction / Resin Cylinders / Pads / Resin Manifolds

## By Industry

Logistics-Palletizing/Sheet Metal-Stamping-Metal Fabrication

Assembling Tools

Tool / Jig

## Information

Various Products Information



# Air Nipper (Small • Medium) ↔ Accessories Selection Table

Cut • Air Nipper (Small • Medium)

Air Nipper (Small • Medium)		Air nipper (10Series)			Air nipper (20Series)						Air nipper (35Series)					Air nipper (50Series)																								
Accessories		131626	073301	131627	073302	131628	073303	131629	131724	073304	131630	073305	131631	131725	073308	131632	073306	131633	073309	131634	073307	131643	131722	073310	131644	131723	073313	131645	073311	131646	073314	131647	073312	131771	073355	131772	073356			
		NW*-10	HNW*-10	NW*-101	HNW*-101	NW*-10R	HNW*-10R	NW*-20	NW*-20-BAST	HNW*-20	NW*-201	HNW*-201	NW*-20R	NW*-20R-BAST	HNW*-20R	NW*-20-V001S	HNW*-20R-V001S	NW*-20R-V001S	HNW*-20R-V001S	NW*-20-01C	HNW*-20-01C	NW*-35	NW*-35-BAST	HNW*-35	NW*-35R	NW*-35R-BAST	HNW*-35R	NW*-35-V001S	HNW*-35-V001S	NW*-35R-V001S	HNW*-35R-V001S	NW*-35-01C	HNW*-35-01C	NW*-50	HNW*-50	NW*-50R	HNW*-50R			
Blade Springs	<b>130744</b> For NW-10	○	○	○	—	—	—	—	—	—	—	—	—	—	—	—	—	—	—	—	—	—	—	—	—	—	—	—	—	—	—	—	—	—	—	—	—			
	<b>131536</b> For NW2-20.35	—	—	—	—	○	○	○	○	○	○	○	○	○	○	○	○	○	○	○	○	○	○	○	○	○	○	○	○	○	○	○	○	○	○	○	○	○	○	
	<b>131618</b> NW-50.50R	—	—	—	—	—	—	—	—	—	—	—	—	—	—	—	—	—	—	—	—	—	—	—	—	—	—	—	—	—	—	—	—	—	—	○	○	○	○	
Piston	<b>130767</b> For NW/NC-10	○	○	○	—	—	—	—	—	—	—	—	—	—	—	—	—	—	—	—	—	—	—	—	—	—	—	—	—	—	—	—	—	—	—	—	—	—		
	<b>130768</b> For NW/NC-20.20	—	—	—	—	○	○	○	○	○	○	○	○	○	○	○	○	○	○	○	○	○	○	○	○	○	○	○	○	○	○	○	○	○	○	○	○	○	○	
	<b>130769</b> For NW/NC-35.35	—	—	—	—	—	—	—	—	—	—	—	—	—	—	—	—	—	—	—	—	○	○	○	○	○	○	○	○	○	○	○	○	○	○	○	○	○	○	○
	<b>131654</b> For NW-50.50R	—	—	—	—	—	—	—	—	—	—	—	—	—	—	—	—	—	—	—	—	—	—	—	—	—	—	—	—	—	—	—	—	—	○	○	○	○	○	
Piston packing	<b>131614</b> NW1-10.10R (LX0125-001-0)	○	○	○	—	—	—	—	—	—	—	—	—	—	—	—	—	—	—	—	—	—	—	—	—	—	—	—	—	—	—	—	—	—	—	—	—	—		
	<b>131615</b> NW2-20.20R (LX0145-003-0)	—	—	—	—	○	○	○	○	○	○	○	○	○	○	○	○	○	○	○	○	○	○	○	○	○	○	○	○	○	○	○	○	○	○	○	○	○	○	
	<b>131487</b> NW1-35.35R (LX0107-001-0)	—	—	—	—	—	—	—	—	—	—	—	—	—	—	—	—	—	—	—	—	○	○	○	○	○	○	○	○	○	○	○	○	○	○	○	○	○	○	○
	<b>131616</b> NW-50.50R (LX0153-110)	—	—	—	—	—	—	—	—	—	—	—	—	—	—	—	—	—	—	—	—	—	—	—	—	—	—	—	—	—	—	—	—	—	○	○	○	○	○	
Piston spring	<b>130766</b> For NC/NW-10 (J09420-014-3)	○	○	○	2 required	2 required	2 required	—	—	—	—	—	—	—	—	—	—	—	—	—	—	—	—	—	—	—	—	—	—	—	—	—	—	—	—	—	—	—		
	<b>130770</b> NC/NW-20.20R (J07930-013-1)	—	—	—	—	○	○	○	○	○	○	○	○	○	○	○	○	○	○	○	○	○	○	○	○	○	○	○	○	○	○	○	○	○	○	○	○	○	○	
	<b>130771</b> For NW-35.35R (NC-3506N-1)	—	—	—	—	—	—	—	—	—	—	—	—	—	—	—	—	—	—	—	—	○	○	○	○	○	○	○	○	○	○	○	○	○	○	○	○	○	○	
	<b>131617</b> NW-50.50R (LX0153-111)	—	—	—	—	—	—	—	—	—	—	—	—	—	—	—	—	—	—	—	—	—	—	—	—	—	—	—	—	—	—	—	—	○	○	○	○	○		
Slide spring	<b>130257</b> For NC/NW-10 (J09420-016-1)	○	○	—	—	—	—	—	—	—	—	—	—	—	—	—	—	—	—	—	—	—	—	—	—	—	—	—	—	—	—	—	—	—	—	—	—	—		
	<b>131679</b> For NW-10R	—	—	○	—	—	—	—	—	—	—	—	—	—	—	—	—	—	—	—	—	—	—	—	—	—	—	—	—	—	—	—	—	—	—	—	—	—		
	<b>130251</b> NC/NW-20.35 (J07930-015-0)	—	—	—	—	○	○	—	—	—	—	—	—	—	—	—	—	—	—	—	—	○	○	○	○	○	○	○	○	○	○	○	○	○	○	○	○	○	○	
	<b>131255</b> NW-20R.35R (J0793R-004-0)	—	—	—	—	—	—	—	—	—	—	—	—	—	—	—	—	—	—	—	—	—	—	—	—	—	—	—	—	—	—	—	—	—	—	—	—	—		
	<b>200254</b> UM8-25	—	—	—	—	—	—	—	—	—	—	—	—	—	—	—	—	—	—	—	—	—	—	—	—	—	—	—	—	—	—	—	—	—	—	○	○	○		
<b>200255</b> UM13-25	—	—	—	—	—	—	—	—	—	—	—	—	—	—	—	—	—	—	—	—	—	—	—	—	—	—	—	—	—	—	—	—	—	—	○	○	○			



# Accessories

Please use for maintenance of the air nipper (small and medium type).

Blade Springs				
	Order code No.	<b>130744</b>	<b>131536</b>	<b>131618</b>
	TYPE	For NW-10	For NW2-20.35	NW-50.50R
	Weight	0.1g	0.2g	1g
	Supported nipper	NW*-10, 10R Series HNW-10, 10R	NW*-20, 20R, 35, 35R Series HNW-20, 20R, 35, 35R	NW*-50, 50R Series HNW*-50, 50R

Piston					
	Order code No.	<b>130767</b>	<b>130768</b>	<b>130769</b>	<b>131654</b>
	TYPE	For NW/NC-10	For NW/NC-20.20R	For NW/NC-35.35R	For NW-50.50R
	Weight	3g	9g	11g	25g
	Supported nipper	NC/NW*-10, 10R Series HNW-10, 10R	NC/NW*-20, 20R Series HNW-20, 20R	NC/NW*-35, 35R Series HNW-35, 35R	NW*-50, 50R Series HNW*-50, 50R

Piston packing					
	Order code No.	<b>131614</b>	<b>131615</b>	<b>131487</b>	<b>131616</b>
	TYPE	NW1-10.10R (LX0125-001-0)	NW2-20.20R (LX0145-003-0)	NW1-35.35R (LX0107-001-0)	NW-50.50R (LX0153-110)
	Weight	0.3g	0.5g	1.2g	1g
	Supported nipper	NC/NW*-10, 10R Series HNW-10, 10R	NC/NW*-20, 20R Series HNW-20, 20R	NW*-35, 35R Series HNW-35, 35R	NW*-50, 50R Series HNW*-50, 50R

Piston spring			
	Order code No.	<b>130766</b>	<b>130770</b>
	TYPE	For NC/NW-10 (J09420-014-3)	For NC/NW-20.20R (J07930-013-1)
	Weight	0.2g	0.5g
	Supported nipper	NC/NW*-10, 10R Series HNW-10, 10R	NC/NW*-20, 20R Series HNW-20, 20R

● Two pieces are used for a nipper

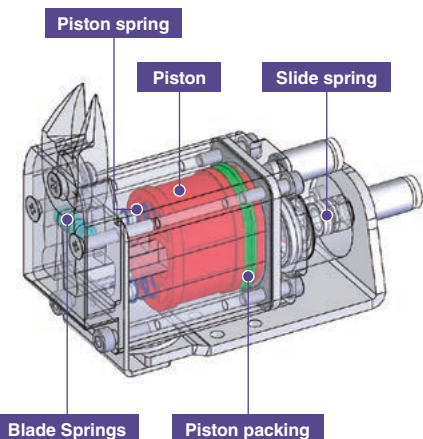
	Order code No.	<b>130771</b>	<b>131617</b>
	TYPE	For NW-35.35R (NC-3506N-1)	NW-50.50R (LX0153-111)
	Weight	5.6g	13g
	Supported nipper	NW*-35, 35R Series HNW-35, 35R	NW*-50, 50R Series HNW*-50, 50R

● One piece be used for a nipper

Slide spring			
	Order code No.	<b>130257</b>	<b>131679</b>
	TYPE	For NC/NW-10 (J09420-016-1)	For NW-10R
	Weight	0.1g	0.1g
	Supported nipper	NW*-10 Series HNW-10	NW*-10R Series HNW-10R

	Order code No.	<b>130251</b>	<b>131255</b>
	TYPE	NC/NW-20.35 (J07930-015-0)	NW-20R.35R (J0793R-004-0)
	Weight	0.4g	1g
	Supported nipper	NW*-20, 35 Series HNW-20, 35	NW*-20R, 35R Series HNW-20R, 35R

	Order code No.	<b>200254</b>	<b>200255</b>
	TYPE	UM8-25	UM13-25
	Weight	1g	3g
	Supported nipper	NW*-50 Series HNW*-50	NW*-50R Series HNW*-50R



## Quick Chuck Change

Quick Chuck Change Manual

Quick Chuck Change Manual (OM Type)

Tool Changer

Automated Hand Exchange System

## Grip

Mini Cylinder

Accessories for Mini Cylinder

Container Cylinders

Accessories for Container Cylinder

Grippers

Rubber Material / Grip Pad

## Suction

Suction Cups

Suction Stems

Pad in Pad

Vacuum Gripper

Air Ejector / Filter / Check Valve

Ultra Small Part Take Out

Vacuum Generator Unit

## Cut

Air Nipper (Small-Medium)

Air Nipper (Large)

## Frame / Module

Jungle Gym

Let's Joint

Rectangular Tube

Base Aluminum Material

Sliding Chuck

## Pneumatic Components / Sensors

Pneumatic Components

Sensors / Multi AND Board

PCIO Communication Unit

Lightweight Parts Series

Frame / Suction / Resin Cylinders / Pads / Resin Manifolds

## By Industry

Logistics-Palletizing/Sheet Metal-Stamping-Metal Fabrication

Assembling Tools

Tool / Jig

## Information

Various Products Information



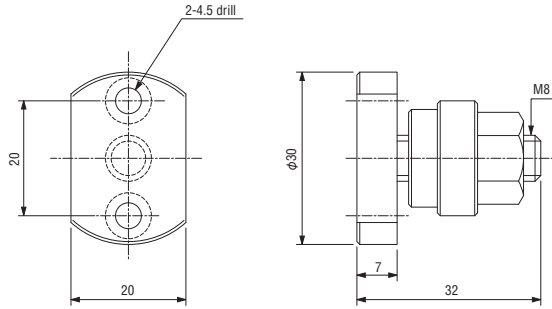
# Nipper Mounting Brackets

Metal fixture to fix an air nipper to a NT gate cut unit.



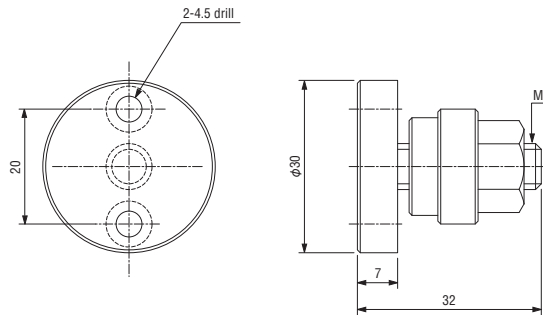
Order code No.	<b>130216</b>
TYPE	<b>For NC/NW-10</b>

- Weight : 61g
- Also can be used for NW\*-20, NW\*-35, HNW-20, HNW-35 series.
- Accessories : taper washer 1 pc  
screw (M4) 2 pc



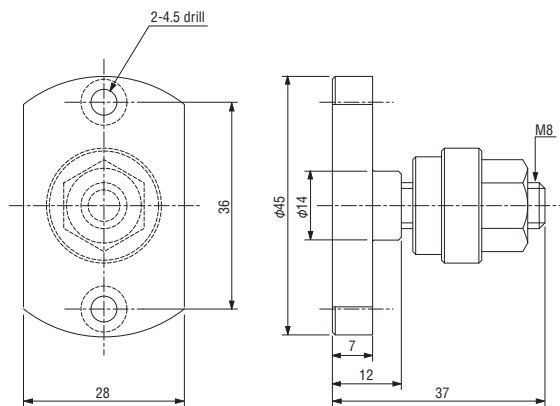
Order code No.	<b>130162</b>
TYPE	<b>For NC/NW-20</b>

- Weight : 70g
- Also can be used for NW\*-35, HNW-35 series.
- Accessories : taper washer 1 pc  
screw (M4) 2 pc



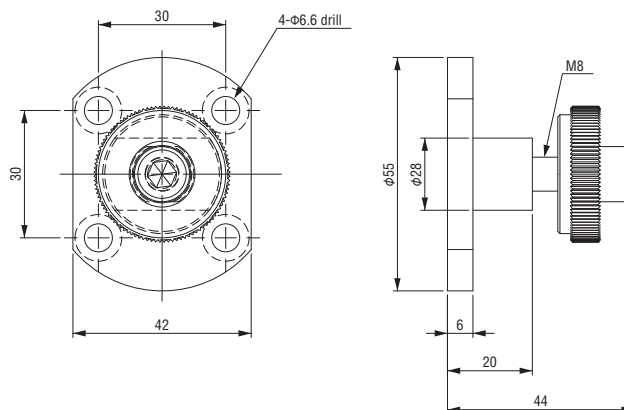
Order code No.	<b>130163</b>
TYPE	<b>For NC/NW-35</b>

- Weight : 99g
- Cannot be used for NW\*-20, HNW-20 series.
- Accessories : taper washer 1 pc  
screw (M4) 2 pc



Order code No.	<b>131621</b>
TYPE	<b>For NW-50</b>

- Weight : 184g
- Only for NW\*-50, HNW\*-50 Series.
- Accessories : M6  $\times$  10 4 piece



Cut ● Air Nipper (Small • Medium)



# NW One Touch Clip / Nipper Adjustment Bracket

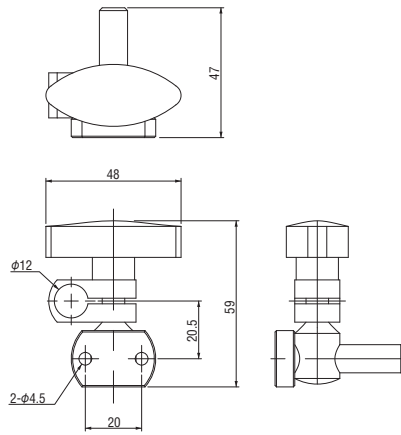
The mounting angle can be free adjusted without using the tool.

## NW One Touch Clip



Order code No.	<b>110558</b>
TYPE	<b>L10160-CL</b>

- Weight : 80g ● Include nipper mounting bracket.
- Accessories : Mounting bolt (M4)\*2piece
- Can be used for NW\*-10, NW\*-20, NW\*-35, HNW-10, HNW-20, HNW-35 Series.
- When using the HNW series, please use a taper washer(123940).



Example of mounting

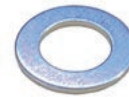
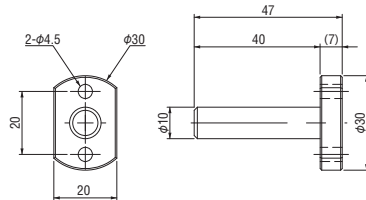
Air Nipper (Small · Medium) is mounted and attached to φ12 SS Jungle Gym



## Nipper mounting brackets

Order code No.	<b>110622</b>
TYPE	<b>L10160-000</b>

- Weight : 20g ● Accessories : Mounting bolt (M4)\*2piece
- Can be used for NW\*-10, NW\*-20, NW\*-35, HNW-10, HNW-20, HNW-35 Series.
- When using the HNW series, please use a taper washer(123940).



## Taper washer

Order code No.	<b>123940</b>
TYPE	<b>M4</b>

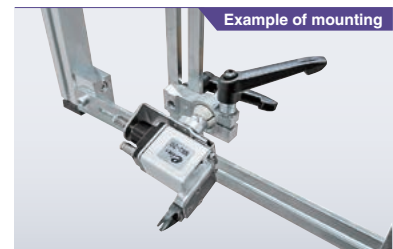
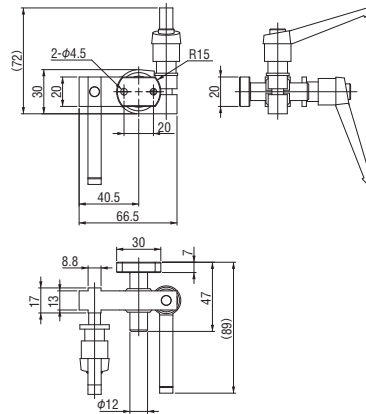
- Weight : 0.15g ● Thickness : 0.5mm

## NEW Nipper Adjustment Bracket



Order code No.	<b>131732</b>
TYPE	<b>NW-ADJBKT</b>

- Weight : 200g ● Include nipper mounting bracket 12.
- Accessories : Mounting bolt (M4)\*2piece
- Can be used for NW\*-10, NW\*-20, NW\*-35, HNW-10, HNW-20, HNW-35 Series.
- When using the HNW series, please use a taper washer(123940).



Example of mounting

Install onto the frame of NT gate cut unit.

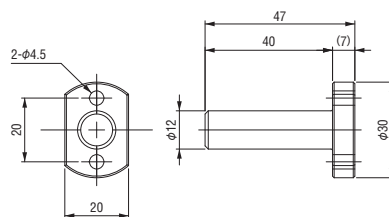
NEW



## Nipper mounting brackets 12

Order code No.	<b>131770</b>
TYPE	<b>NW-MOUNT12-20</b>

- Weight : 22.5g
- Accessories : Mounting bolt (M4)\*2piece
- Can be used for NW\*-10, NW\*-20, NW\*-35, HNW-10, HNW-20, HNW-35 Series.
- When using the HNW series, please use a taper washer(123940).



## Taper washer

Order code No.	<b>123940</b>
TYPE	<b>M4</b>

- Weight : 0.15g ● Thickness : 0.5mm

### Quick Chuck Change

Quick Chuck Change Manual

Quick Chuck Change Manual (OM Type)

Tool Changer

Automated Hand Exchange System

### Grip

Mini Cylinder

Accessories for Mini Cylinder

Container Cylinders

Accessories for Container Cylinder

Grippers

Rubber Material / Grip Pad

### Suction

Suction Cups

Suction Stems

Pad in Pad

Vacuum Gripper

Air Ejector / Filter / Check Valve

Ultra Small Part Take Out

Vacuum Generator Unit

### Cut

Air Nipper (Small-Medium)

Air Nipper (Large)

### Frame / Module

Jungle Gym

Let's Joint

Rectangular Tube

Base Aluminum Material

Sliding Chuck

### Pneumatic Components / Sensors

Pneumatic Components

Sensors / Multi AND Board

PCIO Communication Unit

### Lightweight Parts Series

Frame / Suction / Resin Cylinders / Pads / Resin Manifolds

### By Industry

Logistics - Palletizing / Sheet Metal - Stamping - Metal Fabrication

### Assembling Tools

Tool / Jig

### Information

Various Products Information



## Specifications

Product name	Order code No.	TYPE	Operation	Used air pressure (Mpa)	Applied pressure (N)	Cutting capacity [soft resin] round bar (mm)	Slide amount (mm)	Weight (g)	Page of details				
Air Nipper	Slide vertical w/o blade	060207	GT-NT03	Pull	0.4~0.5	147	φ 1.5	MAX3	178	4-23			
		060208	GT-NT05	Pull		196	φ 2.5		325				
		060225	GT-NT05R	Push		441	φ 3.5		515				
		060209	GT-NT10	Pull				MAX8	930				
		060226	GT-NT10R	Push					931		φ 5		
		060227	GT-NT20	Pull		0.5~0.6	588	Different according to the spare blade.				-	230
	060228	GT-NT20R	Push	1,372	705								
	Square type w/o blade	060240	GT-NS10L						-	2,744	160		
		060241	GT-NS20										1,372
		060242	GT-NS30	2,744	510								
	Round type w/o blade	060083	GT-NR10L						-	588	160		
		060084	GT-NR20	1,372	280								
		060085	GT-NR30			2,744	510						
Booster unit	150793	P-20	-	~0.5	-			-	-	215	4-25		
	150786	P-30				330							
Nipper holder	370336	CP-035 (For GT-NR10L)	-	-	-	-	-	68	4-25				
	370337	CP-036 (For GT-NR20)						87					
	370338	CP-037 (For GT-NR30)						105					
Nipper bracket	110656	LX0090-100 (L.R)	-	-	-	-	-	128	4-25				
Rotation BRT	NEW 131712	For NP-RTB-NR10	-	-	-	-	-	66	4-25				
	NEW 131713	For NP-RTB-NR20						76					
	NEW 131714	For NP-RTB-NR30						109					
Air Nipper	Slide bracket w/o blade	130229	GT-NB20 5-HIKU	Pull	0.5~0.6	1,372	MAX5	710	4-26				
		130230	GT-NB20 5-OSHI	Push						2,744	MAX10	720	
		130231	GT-NB20 10-HIKU	Pull									1,372
		130235	GT-NB30 10-HIKU	Pull		2,744	1,315						
		060477	GT-NB20LW-10TM	Pull				-		-	-	1,078	
		060478	GT-NB30LW-10TM	Pull		-	-						
Sprue cut unit	131565	NS20U	-	-	-			-	-	1,078	4-27		
	NEW 131717	NS20UR				1,200							
Timing controller	060321	GT-TC-02	-	-	-	-	-	275					

Product name	Order code No.	TYPE	Operation	Used air pressure (Mpa)	Cutting capacity [soft resin] round bar (mm)	Slide amount (mm)	Weight (g)	Page of details	
Heat air nipper	Slide vertical w/ blade	060353	GT-NTH05	Pull	0.4~0.5	φ 2.5	MAX3.5	325	4-30
		060354	GT-NTH10	Pull	0.5~0.6	φ 3.5	MAX4.5	515	
	Flow controller type	060355	GT-NKH10	-		Thickness:1.5, Width:7	MAX12	715	
	Heat air nipper air hydro	131709	NKH20XL-25	-		Thickness:1.5, Width:10	MAX10	690	
	Desktop temperature controller for heat nipper	030492	DTC-001	-	-	-	-	900	



# Air Nipper (Large) NT Series

Used for cutting large gate diameter products of direct gate or side gate.

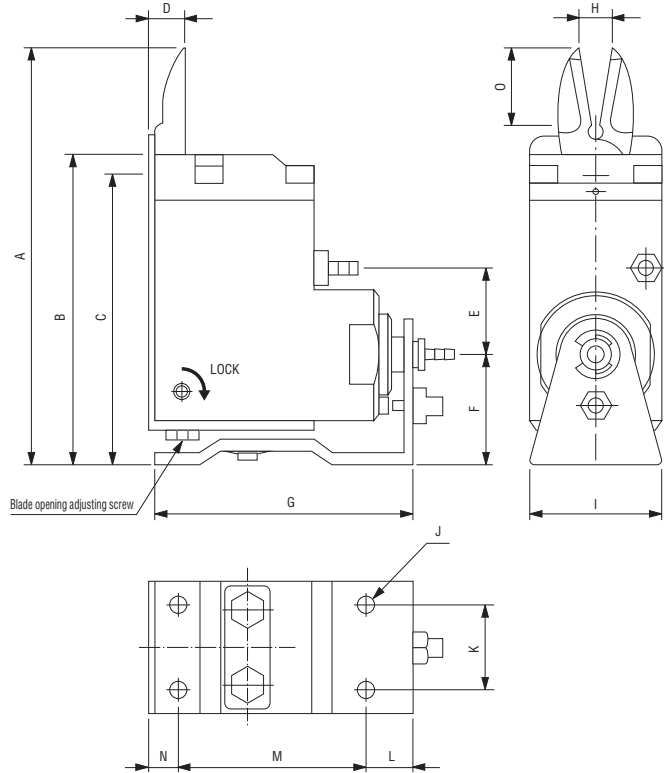
- Spare blades are sold separately. • The photo shows an example of assembled.

## Air nipper slide vertical

- ▶ Blade opening can be adjusted.
- ▶ Slide stroke can be adjusted.
- ▶ A workpiece can be cut by close contact.



**Blade**  
Blade not included



Order code No.	<b>060207</b>
TYPE	<b>GT-NT03</b>

• Weight : 178g

Uses Standard blade	Operation <b>Pull</b>	Blade <b>Option</b>
---------------------	-----------------------	---------------------

Order code No.	<b>060208</b>
TYPE	<b>GT-NT05</b>

• Weight : 325g

Uses Standard blade	Operation <b>Pull</b>	Blade <b>Option</b>
---------------------	-----------------------	---------------------

Order code No.	<b>060225</b>
TYPE	<b>GT-NT05R</b>

• Weight : 325g

Uses Reverse blade	Operation <b>Push</b>	Blade <b>Option</b>
--------------------	-----------------------	---------------------

Order code No.	<b>060209</b>
TYPE	<b>GT-NT10</b>

• Weight : 515g

Uses Standard blade	Operation <b>Pull</b>	Blade <b>Option</b>
---------------------	-----------------------	---------------------

Order code No.	<b>060226</b>
TYPE	<b>GT-NT10R</b>

• Weight : 515g

Uses Reverse blade	Operation <b>Push</b>	Blade <b>Option</b>
--------------------	-----------------------	---------------------

Order code No.	<b>060227</b>
TYPE	<b>GT-NT20</b>

• Weight : 930g

Uses Standard blade	Operation <b>Pull</b>	Blade <b>Option</b>
---------------------	-----------------------	---------------------

Order code No.	<b>060228</b>
TYPE	<b>GT-NT20R</b>

• Weight : 930g

Uses Reverse blade	Operation <b>Push</b>	Blade <b>Option</b>
--------------------	-----------------------	---------------------

## Blade for GT-NT

Spare blade for GT-NT \*The standard and reverse directions of spare blade can be changed.

Order code No.	<b>130403</b>	<b>130310</b>	<b>130311</b>	<b>130404</b>
TYPE	<b>NT03AJ</b>	<b>NE5AJ</b>	<b>NE10AJ</b>	<b>NT20AJ</b>
Supported nipper	GT-NT03(R)	GT-NT05(R)	GT-NT10(R)	GT-NT20(R)

## Dimensions

(mm)

TYPE	GT-NT03	GT-NT05	GT-NT10	GT-NT20
A	87.1	90.1	110.1	136.1
B	68.1	71.1	88.1	102.1
C	63.1	66.1	83.1	96.1
D	9	9	11	14
E	15	20	21	21.9
F	23.1	25.1	29.1	33.1
G	62	64	73	103
H	MAX3	MAX6	MAX7	MAX9
I	19	32	38	44
J	M3	M4	M4	M5
K	14	20	24	28
L	12	12	12	13
M	43	45	53	80
N	7	7	8	10
O	12	13	14	21.5

## Quick Chuck Change

Quick Chuck Change Manual

Quick Chuck Change Manual (OM Type)

Tool Changer

Automated Hand Exchange System

## Grip

Mini Cylinder

Accessories for Mini Cylinder

Container Cylinders

Accessories for Container Cylinder

Grippers

Rubber Material / Grip Pad

## Suction

Suction Cups

Suction Stems

Pad in Pad

Vacuum Gripper

Air Ejector / Filter / Check Valve

Ultra Small Part Take Out

Vacuum Generator Unit

## Cut

Air Nipper (Small-Medium)

Air Nipper (Large)

## Frame / Module

Jungle Gym

Let's Joint

Rectangular Tube

Base Aluminum Material

Sliding Chuck

## Pneumatic Components / Sensors

Pneumatic Components

Sensors / Multi AND Board

PCIO Communication Unit

## Lightweight Parts Series

Frame / Suction / Resin Cylinders / Pads / Resin Manifolds

## By Industry

Logistics-Palletizing/Sheet Metal-Stamping-Metal Fabrication

## Assembling Tools

Tool / Jig

## Information

Various Products Information



# Air Nipper (Large) NS/NR Series / Pressure Boosting Unit

Used for cutting large gate diameter products of direct gate or side gate.

● Spare blade and spring are sold separately. ● The photo shows an example of assembled.

## Air nipper square type

Blade  
Blade not  
included

→ 4-28.29



Order code No.	<b>060240</b>
TYPE	<b>GT-NS10L</b>

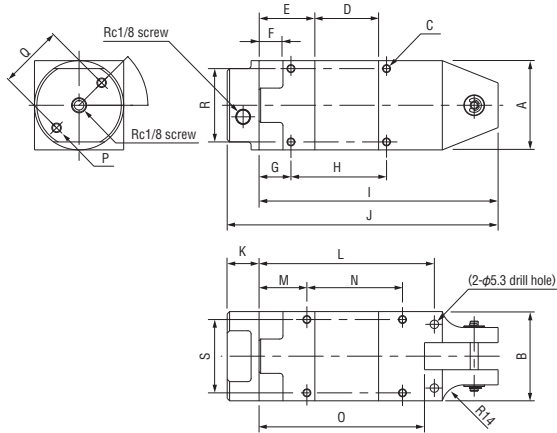
● Weight : 230g

Order code No.	<b>060241</b>
TYPE	<b>GT-NS20</b>

● Weight : 390g

Order code No.	<b>060242</b>
TYPE	<b>GT-NS30</b>

● Weight : 705g



## Dimensions

(mm)

TYPE	GT-NS10L	GT-NS20	GT-NS30
A	36	45	56
B	36	45	56
C	16-M4×0.7 screw depth 5.5	16-M4×0.7 screw depth 7	16-M5×0.8 screw depth 10
D	17	25	40
E	27	29	35
F	14	14	15
G	18	19	20
H	30	40	60
I	93	109	150
J	113	129	170
K	20	20	20
L	65	81	110
M	23	24	30
N	30	40	60
O	59.8	76.8	103.8
P	2-M4 screw depth 10	2-M5 screw depth 12	2-M6 screw depth 12
Q	24	30	40
R	28	36	46
S	28	36	46

## Air nipper round type

Blade  
Blade not  
included

→ 4-28.29



Order code No.	<b>060083</b>
TYPE	<b>GT-NR10L</b>

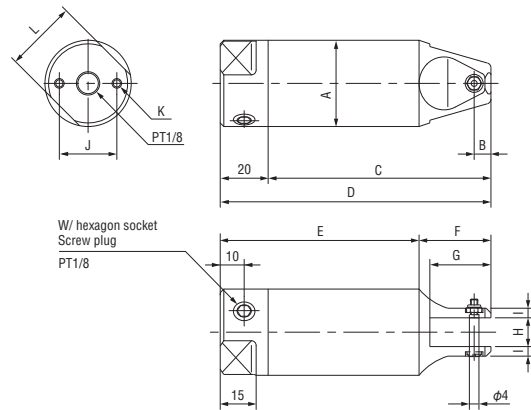
● Weight : 160g

Order code No.	<b>060084</b>
TYPE	<b>GT-NR20</b>

● Weight : 280g

Order code No.	<b>060085</b>
TYPE	<b>GT-NR30</b>

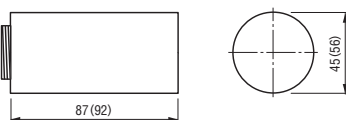
● Weight : 510g



## Dimensions

(mm)

TYPE	GT-NR10L	GT-NR20	GT-NR30
A	φ 36	φ 45	φ 56
B	7	6	10
C	93	109	145
D	113	129	165
E	83	100	127
F	30	29	38
G	22.5	19	28.5
H	12	12	17
I	4	5.5	6.5
J	24	30	40
K	2-M4 screw depth 10	2-M5 screw depth 12	2-M6 screw depth 12
L	30	36	46



\* ( ) inside indicates the dimension of P-30.

▶ When original welding pressure cannot be created with limitations of space and air pressure.

## Booster unit

Order code No.	<b>150793</b>
TYPE	<b>P-20</b>

- Weight : 215g
- Air consumption : 508cm<sup>3</sup>
- Air pressure power : ~0.5MPa
- Applicable : NS20, NR20

## Booster unit

Order code No.	<b>150786</b>
TYPE	<b>P-30</b>

- Weight : 330g
- Air consumption : 956cm<sup>3</sup>
- Air pressure power : ~0.5MPa
- Applicable : NS30, NR30





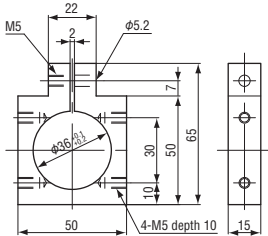
# Air Nipper (Large) Holder / Bracket / Rotation BRT

Use the product by mounting to round nipper "GT-NR series."

## Nipper Holder

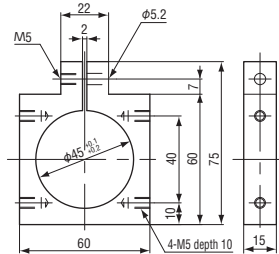
Order code No.	<b>370336</b>
TYPE	<b>CP-035 (For GT-NR10L)</b>

● Weight : 68g



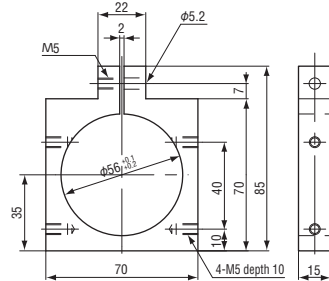
Order code No.	<b>370337</b>
TYPE	<b>CP-036 (For GT-NR20)</b>

● Weight : 87g



Order code No.	<b>370338</b>
TYPE	<b>CP-037 (For GT-NR30)</b>

● Weight : 105g

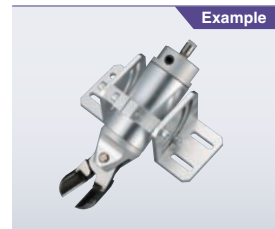
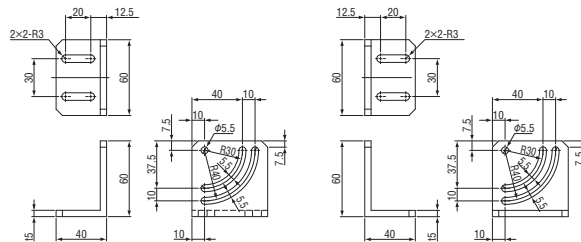


## Nipper Bracket



Order code No.	<b>110656</b>
TYPE	<b>LX0090-100 (L.R)</b>

- Weight : 128g (Set Weight)
- Include L and R brackets



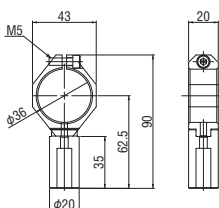
● The photo shows an example of assembled GT-NR20, CP-036, and LX0090-100.

## Rotation BRT (for NR Nipper )



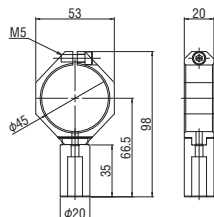
Order code No.	<b>131712</b>
TYPE	<b>For NP-RTB-NR10</b>

● Weight : 66g



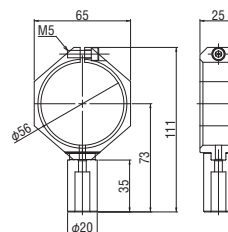
Order code No.	<b>131713</b>
TYPE	<b>For NP-RTB-NR20</b>

● Weight : 76g



Order code No.	<b>131714</b>
TYPE	<b>For NP-RTB-NR30</b>

● Weight : 109g



● Please use in combination with Jungle Gym Series  $\phi$ 20.

### Quick Chuck Change

Quick Chuck Change Manual

Quick Chuck Change Manual (OM Type)

Tool Changer

Automated Hand Exchange System

### Grip

Mini Cylinder

Accessories for Mini Cylinder

Container Cylinders

Accessories for Container Cylinder

Grippers

Rubber Material / Grip Pad

### Suction

Suction Cups

Suction Stems

Pad in Pad

Vacuum Gripper

Air Ejector / Filter / Check Valve

Ultra Small Part Take Out

Vacuum Generator Unit

### Cut

Air Nipper (Small-Medium)

Air Nipper (Large)

### Frame / Module

Jungle Gym

Let's Joint

Rectangular Tube

Base Aluminum Material

Sliding Chuck

### Pneumatic Components / Sensors

Pneumatic Components

Sensors / Multi AND Board

PCIO Communication Unit

### Lightweight Parts Series

Frame / Section / Resin Cylinders / Pads / Resin Manifolds

### By Industry

Logistics-Palletizing/Sheet Metal-Stamping-Metal Fabrication

### Assembling Tools

Tool / Jig

### Information

Various Products Information



# Air Nipper (Large) NB Series

Used for cutting large gate diameter products of direct gate or side gate.

- Spare blade and spring are sold separately. (The photo is an example of assembly.)
- Can not be sold separate. ● The spare blade is compatible with GT-NR.

## Slide air nipper

- ▶ Can be used for gate cut devices with slide air nipper bracket type.
- ▶ Applicable with cutting of large sized molded parts.

Blade  
Blade not included  
→ 4-28.29



Order code No. **130229**  
TYPE **GT-NB20 5-HIKU**

- Weight : 710g ● Slide amount : 5mm

Operation **Pull** Blade **Option**

Order code No. **130230**  
TYPE **GT-NB20 5-OSHI**

- Weight : 710g ● Slide amount : 5mm

Operation **Push** Blade **Option**

Order code No. **130231**  
TYPE **GT-NB20 10-HIKU**

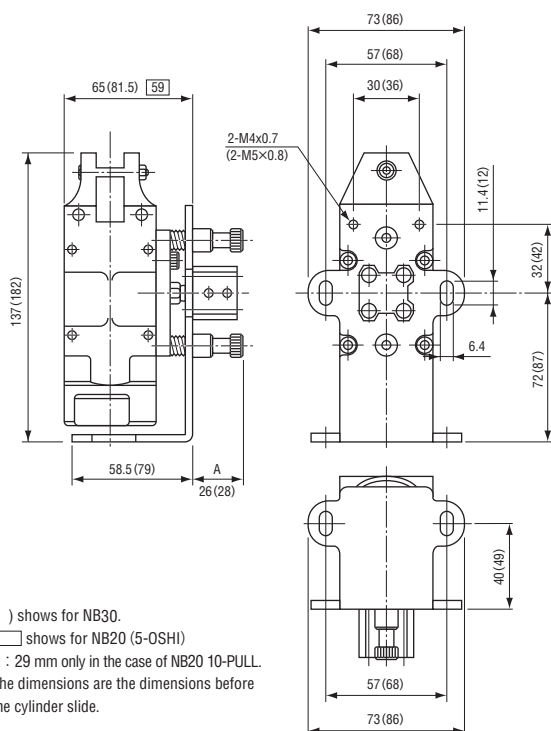
- Weight : 720g ● Slide amount : 10mm

Operation **Pull** Blade **Option**

Order code No. **130235**  
TYPE **GT-NB30 10-HIKU**

- Weight : 1,400g ● Slide amount : 10mm

Operation **Pull** Blade **Option**



- \* ( ) shows for NB30.
- shows for NB20 (5-OSHI)
- \* A : 29 mm only in the case of NB20 10-PULL.
- \* The dimensions are the dimensions before the cylinder slide.

- ▶ W/ slide mechanism with high precision.

Blade  
Blade not included  
→ 4-28.29



Order code No. **060477**  
TYPE **GT-NB20LW-10TM**

- Weight : 785g ● Slide amount : 10mm

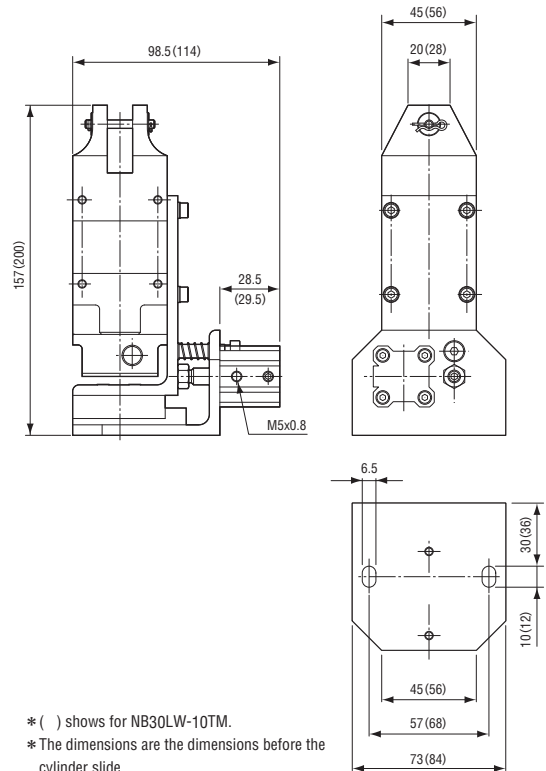
Operation **Pull** Blade **Option**

Order code No. **060478**  
TYPE **GT-NB30LW-10TM**

- Weight : 1,315g ● Slide amount : 10mm

Operation **Pull** Blade **Option**

High-precision slide mechanism



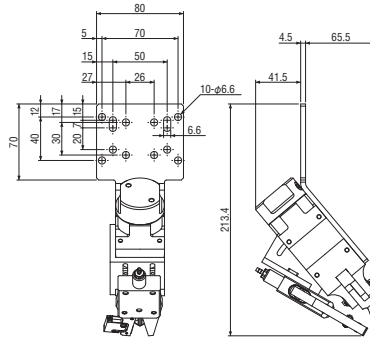
- \* ( ) shows for NB30LW-10TM.
- \* The dimensions are the dimensions before the cylinder slide.



# Sprue Cut Unit / Timing Controller

Cutting with sprue chucking is possible.

► Most suitable for plastic direct gate.

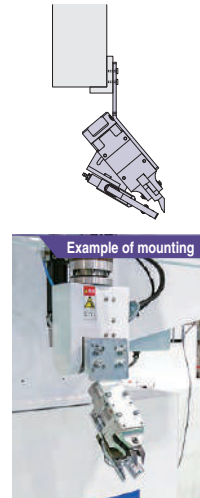


## Sprue Cut Unit

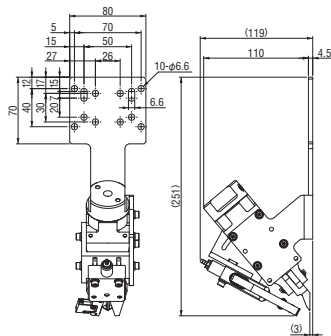
Order code No.	<b>131565</b>
TYPE	<b>NS20U</b>

- Weight : 1,078g
- Sold as a set.
- Runner chuck: Limit SW type

Product name	Order code No.	TYPE	Qty	Page of details
Runner chuck EL (Limit SW)	<b>023006</b>	CHK-EL1-12-C1	1	<b>2-35</b>
Air nipper square type (w/o blade)	<b>060241</b>	GT-NS20	1	<b>4-24</b>
Blade for GT-20L flat	<b>130726</b>	N20PF	1	<b>4-28</b>
Sprue cut unit (parts)	-	-	1	-



**NEW**

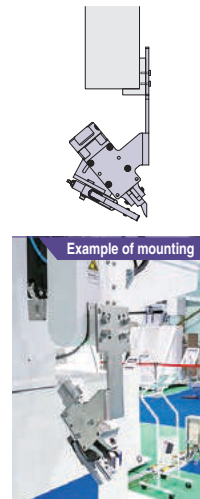


## Sprue Cut Unit

Order code No.	<b>131717</b>
TYPE	<b>NS20UR</b>

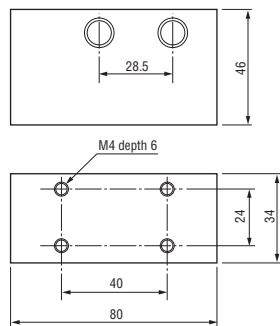
- Weight : 1,200g
- Sold as a set.
- Runner chuck: Limit SW type

Product name	Order code No.	TYPE	Qty	Page of details
Runner chuck EL (Limit SW)	<b>023006</b>	CHK-EL1-12-C1	1	<b>2-35</b>
Air nipper square type (w/o blade)	<b>060241</b>	GT-NS20	1	<b>4-24</b>
Blade for GT-20L flat	<b>130726</b>	N20PF	1	<b>4-28</b>
Sprue cut unit (parts)	-	-	1	-



► Setting in tubing allows adjustment of slide conditions for slide nippers and cutting timing.  
(About 0.5-1.5 seconds)

Timing adjustable screw  
(About 0.5-1.5 seconds)

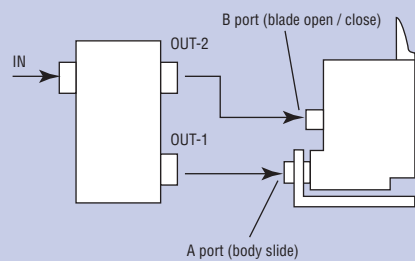


## Timing controller

Order code No.	<b>060321</b>
TYPE	<b>GT-TC-02</b>

- Weight : 275g
- Air pressure power : 0.6MPa
- With tube joint : inner diameter φ4mm, outside-diameter φ6mm

## Example of connection



3-port magnet valve (compressor side) → Timing controller → Slide Air nipper

### Quick Chuck Change

Quick Chuck Change Manual

Quick Chuck Change Manual (OM Type)

Tool Changer

Automated Hand Exchange System

### Grip

Mini Cylinder

Accessories for Mini Cylinder

Container Cylinders

Accessories for Container Cylinder

Grippers

Rubber Material / Grip Pad

### Suction

Suction Cups

Suction Stems

Pad in Pad

Vacuum Gripper

Air Ejector / Filter / Check Valve

Ultra Small Part Take Out

Vacuum Generator Unit

### Cut

Air Nipper (Small-Medium)

Air Nipper (Large)

### Frame / Module

Jungle Gym

Let's Joint

Rectangular Tube

Base Aluminum Material

Sliding Chuck

### Pneumatic Components / Sensors

Pneumatic Components

Sensors / Multi AND Board

PCIO Communication Unit

### Lightweight Parts Series

Frame / Suction / Resin Cylinders / Pads / Resin Manifolds

### By Industry

Logistics-Palletizing/Sheet Metal-Stamping-Metal Fabrication

### Assembling Tools

Tool / Jig

### Information

Various Products Information



# Air Nipper (Large) Replacement Blades / Accessories



Please refer to the website for performance table.

Spare blades for GT-NS/GT-NR/GT-NB.

● The cutting capacity depends on the material.

## ▶ Supported nipper : GT-NS10L/GT-NR10L

Dimensions	Specifications	
	Order code No.	<b>130218</b>
	TYPE	<b>N10L1S</b>
	Weight	165g
	Opened blade-to blade distance	10mm
	Order code No.	<b>130219</b>
	TYPE	<b>N10L2S</b>
	Weight	170g
	Opened blade-to blade distance	10mm
	Cutting capacity (soft resin)	φ 3.5
	Order code No.	<b>130219</b>
	TYPE	<b>N10L2S</b>
	Weight	170g
	Opened blade-to blade distance	10mm
	Cutting capacity (soft resin)	φ 3.5

Dimensions	Specifications	
	Order code No.	<b>130724</b>
	TYPE	<b>N10LAP</b>
	Weight	132g
	Opened blade-to blade distance	5mm
	Cutting capacity (soft resin)	φ 4
	Order code No.	<b>130725</b>
	TYPE	<b>N10LPF</b>
	Weight	136g
	Opened blade-to blade distance	5mm
	Cutting capacity (soft resin)	φ 4

## ▶ Supported nipper : GT-NS20/GT-NR20/GT-NB20

Dimensions	Specifications	
	Order code No.	<b>130222</b>
	TYPE	<b>N203S</b>
	Weight	185g
	Opened blade-to blade distance	14mm
	Cutting capacity (soft resin)	φ 6
	Order code No.	<b>130220</b>
	TYPE	<b>N201S</b>
	Weight	200g
	Opened blade-to blade distance	16mm
	Cutting capacity (soft resin)	φ 6
	Order code No.	<b>130221</b>
	TYPE	<b>N202S</b>
	Weight	175g
	Opened blade-to blade distance	14mm
	Cutting capacity (soft resin)	φ 6
	Order code No.	<b>130726</b>
	TYPE	<b>N20PF</b>
	Weight	130g
	Opened blade-to blade distance	11mm
	Cutting capacity (soft resin)	φ 7
	Order code No.	<b>130697</b>
	TYPE	<b>N20AJ</b>
	Weight	125g
	Opened blade-to blade distance	11mm
	Cutting capacity (soft resin)	φ 7

Dimensions	Specifications	
	Order code No.	<b>130680</b>
	TYPE	<b>N20AP</b>
	Weight	130g
	Opened blade-to blade distance	11mm
	Cutting capacity (soft resin)	φ 7
	Order code No.	<b>130727</b>
	TYPE	<b>N20AE</b>
	Weight	145g
	Opened blade-to blade distance	8mm
	Cutting capacity (soft resin)	φ 7
	Order code No.	<b>130265</b>
	TYPE	<b>N206S</b>
	Weight	170g
	Opened blade-to blade distance	14mm
	Cutting capacity (soft resin)	φ 6
	Order code No.	<b>131602</b>
	TYPE	<b>N207SA</b>
	Weight	190g
	Opened blade-to blade distance	13mm
	Cutting capacity (soft resin)	φ 6
	Order code No.	<b>130655</b>
	TYPE	<b>N20AJL</b>
	Weight	230g
	Opened blade-to blade distance	16mm
	Cutting capacity (soft resin)	φ 6



N201S



N301S



N30AE

► Supported nipper : **GT-NS20/GT-NR20/GT-NB20**

Dimensions	Specifications	
	Order code No.	<b>131466</b>
	TYPE	<b>N20AML1498</b>
	Weight	270g
	Opened blade-to blade distance	9.5mm
	Order code No.	<b>131467</b>
	TYPE	<b>N20AH</b>
	Weight	240g
	Opened blade-to blade distance	16mm
	Weight	240g
	Cutting capacity (soft resin)	φ6

Dimensions	Specifications	
	Order code No.	<b>131468</b>
	TYPE	<b>N20AMR1499</b>
	Weight	270g
	Opened blade-to blade distance	9.5mm
	Order code No.	<b>131469</b>
	TYPE	<b>N20AK249</b>
	Weight	240g
	Opened blade-to blade distance	14mm
	Weight	240g
	Cutting capacity (soft resin)	φ5.5

► Supported nipper : **GT-NS30/GT-NR30/GT-NB30**

Dimensions	Specifications		
	Order code No.	<b>130225</b>	
	TYPE	<b>N301S</b>	
	Weight	390g	
	Opened blade-to blade distance	20mm	
	Order code No.	<b>130329</b>	
	TYPE	<b>N30AP</b>	
	Weight	380g	
	Opened blade-to blade distance	16mm	
	Order code No.	<b>131601</b>	
	TYPE	<b>N303SA</b>	
	Weight	390g	
	Opened blade-to blade distance	16mm	
	Weight	390g	
	Cutting capacity (soft resin)	φ8	
		Order code No.	<b>131470</b>
		TYPE	<b>N30AJL</b>
Weight		470g	
Opened blade-to blade distance		19mm	
	Weight	470g	
	Cutting capacity (soft resin)	φ8	

Dimensions	Specifications		
	Order code No.	<b>130730</b>	
	TYPE	<b>N30PF</b>	
	Weight	415g	
	Opened blade-to blade distance	15mm	
	Order code No.	<b>130729</b>	
	TYPE	<b>N30AE</b>	
	Weight	440g	
	Opened blade-to blade distance	12mm	
	Weight	440g	
	Cutting capacity (soft resin)	φ10	
		Order code No.	<b>130795</b>
		TYPE	<b>N30AJ</b>
Weight		370g	
Opened blade-to blade distance		14mm	
	Weight	370g	
	Cutting capacity (soft resin)	φ10	

► Blade Springs

	Order code No.	<b>060100</b>
	TYPE	<b>GT-NR10L.20 (N10L.N20 Spare Blade)</b>
	Supported nipper	NS/NR 10L、NS/NR/NB 20

	Order code No.	<b>060101</b>
	TYPE	<b>GT-NR30 (N30 Spare Blade)</b>
	Supported nipper	NS/NR/NB 30

Quick Chuck Change

Quick Chuck Change Manual

Quick Chuck Change Manual (OM Type)

Tool Changer

Automated Hand Exchange System

Grip

Mini Cylinder

Accessories for Mini Cylinder

Container Cylinders

Accessories for Container Cylinder

Grippers

Rubber Material / Grip Pad

Suction

Suction Cups

Suction Stems

Pad in Pad

Vacuum Gripper

Air Ejector / Filter / Check Valve

Ultra Small Part Take Out

Vacuum Generator Unit

Cut

Air Nipper (Small-Medium)

Air Nipper (Large)

Frame / Module

Jungle Gym

Let's Joint

Rectangular Tube

Base Aluminum Material

Sliding Chuck

Pneumatic Components / Sensors

Pneumatic Components

Sensors / Multi AND Board

PCIO Communication Unit

Lightweight Parts Series

Frame / Section / Resin Cylinders / Pads / Resin Manifolds

By Industry

Logistics-Palletizing/Sheet Metal-Stamping-Metal Fabrication

Assembling Tools

Tool / Jig

Information

Various Products Information



# Heat Air Nipper (NTH Series / NKH Series)

Used for cutting large gate diameter products of direct gate or side gate.

- ▶ Gate cut transparent products such as acrylic without whitening or cracking!

\* Attachments: blade, temperature sensor harness, thermocouple harness



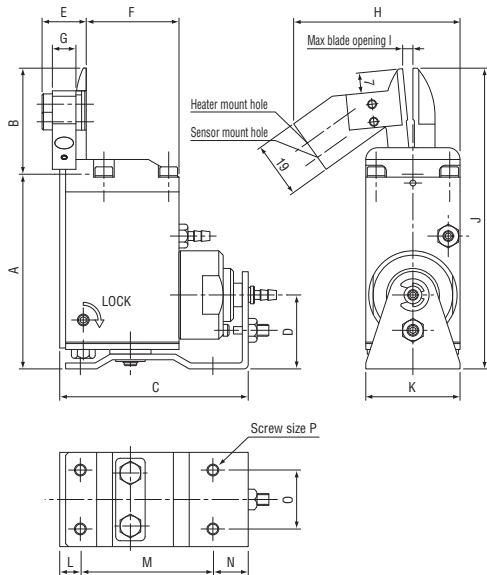
Heat air nipper slide vertical

Order code No.	<b>060353</b>
TYPE	<b>GT-NTH05</b>

- Weight : 325g

Order code No.	<b>060354</b>
TYPE	<b>GT-NTH10</b>

- Weight : 515g
- Heater specification : 80W/120V Length 300mm
- Sensor specifications : K thermocouple Length 1000mm



- ▶ It is ideal for gate cutting of glass fibers and hard resins.

- ▶ There are few cracks in the workpiece, and the finished surface is clean.

\* Attachments: blade, temperature sensor harness, thermocouple harness



## Flow Controller Type

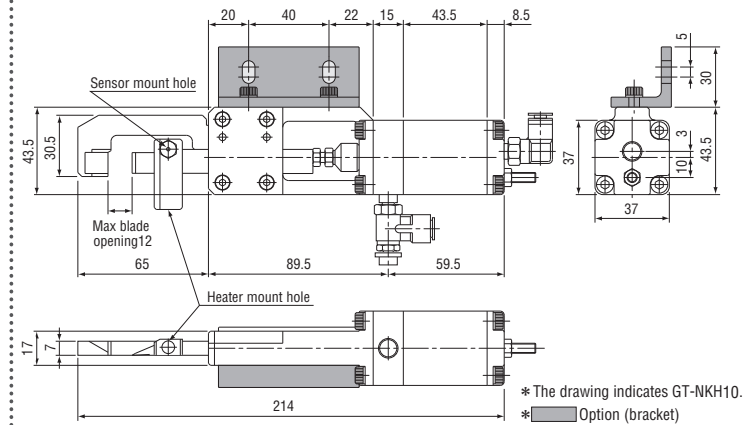
Order code No.	<b>060355</b>
TYPE	<b>GT-NKH10</b>

- Weight : 715g
- Opened blade-to blade distance : 10mm
- Heater specification : 80W/120V Length 300mm
- Sensor specifications : K thermocouple Length 1000mm

## Air Hydro Type

Order code No.	<b>131709</b>
TYPE	<b>NKH20XL-25</b>

- Weight : 690g
- Opened blade-to blade distance : 20mm
- Heater specification : 80W/100V Length 300mm
- Sensor specifications : K thermocouple Length 300mm
- Two Hydro converters are required. Hydro converter (Recommended product) : KOGANEI CO.,LTD. Type : AHC 32 × 50



Cut ● Air Nipper (Large)

## Dimensions

(mm)

TYPE	GT-NTH05	GT-NTH10
A	66.1	83
B	36	47
C	64	73
D	25.1	29
E	15	16.2
F	31.5	37.5
G	8	8
H	56.5	63
I	3.5	4.5
J	102.1	130
K	32	38
L	7	8
M	45	53
N	12	12
O	20	24
P	M4	M4

- ▶ Desktop temperature controller for heat nipper

## Desktop temperature controller for heat nipper

Order code No.	<b>030492</b>
TYPE	<b>DTC-001</b>

- Weight : 900g
- Power supply voltage : AC100-240V
- Power consumption: about 3W or 5VA (no-load condition)
- Output capacity: 12A MAX (~1.2kw) resistance load
- Ambient operating temperature: 0-40°C RH35-85% (non-condensing)
- The power supply voltage is output to the heater as it is, so check the heater voltage.
- When using the 200V power supply, change the heater line to 200V specification.

